



# TANDEM plus BLUMOTION

Premium Concealed Runners for Wood Drawers

[blum.com](https://blum.com)

 **blum**<sup>®</sup>

# TANDEM plus BLUMOTION

TANDEM plus BLUMOTION brings together all of the features, innovations and benefits that Blum has developed since first manufacturing drawer runners in the early 1960s. The first time you open and close a fully loaded drawer, you will quickly realize that TANDEM plus BLUMOTION concealed runners are unmatched in quality, style and running action.





## Contents

### TANDEM plus BLUMOTION

6	Overview
7	Testing Standards
8	General Specifications
10	Using TANDEM plus BLUMOTION
11	Drawer Preparation
12	Standard Applications
22	Inset Drawer
24	Narrow Drawer
26	Lateral Stabilizer for 563/569
28	Roll-out Shelf
29	Bottom Mount Drawer
30	SPACE CORNER
32	Locking Devices
34	Rear Attachment Options
36	TIP-ON for TANDEM plus
38	Accessories and Assembly Aids
42	ORGA-LINE
44	Additional Information
45	Part Number Index

# Made in the USA

Manufactured at our North Carolina facility, TANDEM plus BLUMOTION concealed runners are mounted discreetly beneath the drawer and have the quietest opening and softest closing action available.

These top-of-the-line concealed runners are the industry choice for dovetail drawers in high-end cabinetry, in either face frame or frameless.



### Adjustable and Versatile

TANDEM plus BLUMOTION concealed runners offer four-dimensional adjustment, elongated holes for depth adjustment, bottom mount holes and exceptional load capacity.

The availability of a wide variety of locking devices, rear mounting brackets, sockets and templates make installation virtually effortless.



### The Right Solution for Every Drawer

These concealed runners are the perfect solution for virtually any drawer. Kitchens, vanities, closets, home office and furniture all benefit from the smooth running and soft closing action of TANDEM plus BLUMOTION.

The customer only sees the beauty of the wood drawers while experiencing the quality of motion and soft closing they have come to expect from Blum products.



## TANDEM plus BLUMOTION

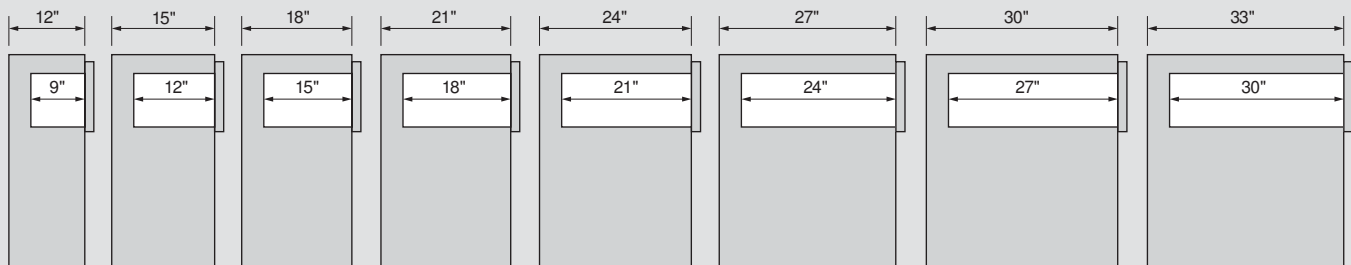


### Overview

Drawer length	Full extension	Full extension with BLUMOTION		Heavy duty full extension with BLUMOTION	
	Maximum drawer thickness	Maximum drawer thickness		Maximum drawer thickness	
	5/8"	5/8"	3/4"	5/8"	3/4"
9"		563H	563F		
12"	562H				
15"					
18"		563H and 563.		569H	569F
21"					
24"				569.	569A
27"					
30"					
Capacity static/dynamic	100/75 lb	100/90 lb*		150/135 lb*	

\*Per ANSI/BHMA A156.9 Grade 1 standards on a 21" length drawer box

### Standard lengths



TANDEM series runners are based on the American standard 3" cabinet depth system, therefore runner lengths are in 3" increments. TANDEM plus runners are available for drawers from 9" to 30" in length.



### Planning Tools

Blum has downloadable Excel® spreadsheets that provide the required parts and calculate the mounting locations for your application.

Planning tools are easily accessible on our website at [blum.com/planning](http://blum.com/planning)



**ISO 9001**

Blum, Inc. is ISO 9001 certified which means that you are assured of consistent quality in every Blum product.

**ANSI/BHMA**

All Blum runners meet or exceed ANSI/BHMA A156.9 Grade 1 requirements. Contact your local Blum representative for more details.

**General Information**

All Blum hardware undergoes strict quality control procedures through all stages of production. Blum hardware is designed for cabinets and cabinet components made from wood, melamine or MDF. Careful attention must be paid to installation and operating instructions when using Blum hardware (see catalogs and instruction sheets for all technical information). The manufacturer must decide on the screws or attachment methods to suit the material being used (i.e. wood, melamine, etc.). The hardware must not be exposed to acidic or corrosive materials (i.e. some household cleaning solutions). To ensure that Blum hardware functions correctly, it must be kept clean and undamaged. For any additional information please contact your Blum representative. Anyone selling Blum hardware must ensure that their customer is aware of any relevant information given in this catalog.

**Conditions of Sale and Delivery**

All deliveries and services are based on the "general conditions of sale" which are available upon request. The technical presentations and dimensions in illustrations are non-binding. We reserve the right to make changes to specifications at any time. We do not accept any responsibility for any errors which may occur in the production of this catalog.

## TANDEM plus BLUMOTION



### Complete Runner System

- Full extension concealed runners with BLUMOTION soft close
- Zinc-coated steel
- Concealed roller carriage with permanently lubricated synthetic rollers
- Available in standard and heavy duty
- H and . series for drawers up to 5/8" side material thickness
- F and A series for drawers up to 3/4" side material thickness
- Elongated holes for depth adjustment
- Bottom mount holes on 15", 18" and 21" standard duty
- Tool-free tilt adjustment
- Tool-free rear side-to-side adjustment

### Locking Devices

- Stamped steel or zinc die-cast base with synthetic, spring-loaded release levers
- Captive right device, self-aligning left device
- Self-adjusting drawer length tolerance
- Tool-free height adjustment
- Tool-free front side-to-side adjustment
- Available with depth adjustment
- Available for narrow drawers

### Rear Mounting Options

- Zinc-coated steel brackets or nylon sockets
- Depth and lateral self-alignment

### One Runner for All Applications

TANDEM runners are designed for the American 3" increment cabinet depth system. This feature permits overlay or inset applications to use the same runner. Full length runners make installation in frameless or face frame cabinets possible.

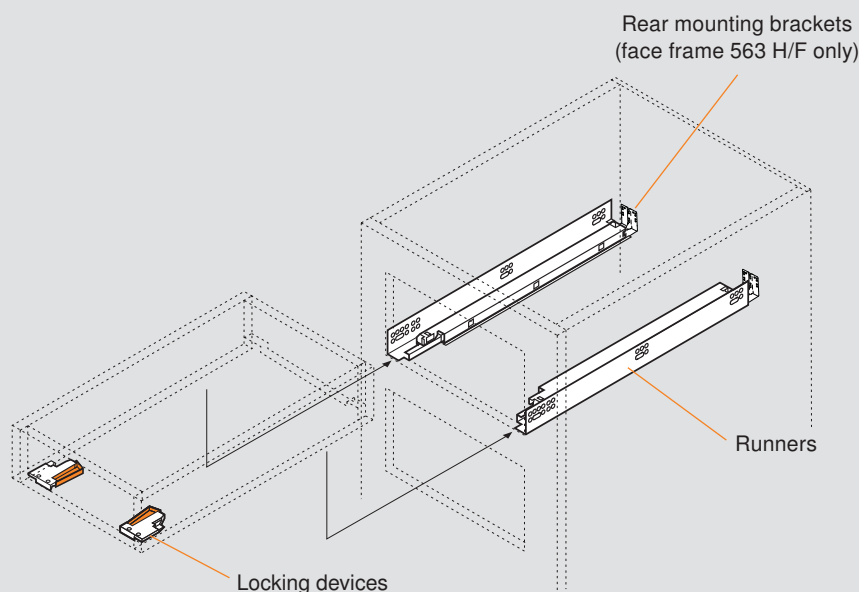
### Load Capacities

- 100 lb static, 90 lb dynamic for TANDEM plus BLUMOTION 563 series
- 150 lb static, 135 lb dynamic for TANDEM plus BLUMOTION 569 series

## General Specifications

### Drawer components

**NOTE:** For 563. and 569 series, rear brackets and sockets cannot be used. Cabinet sides must be blocked-out flush with the inside of the face frame.



**NOTE:** Rear mounting brackets used for face frame applications only

### Locking devices

Locking devices allow easy insertion and removal of drawers



page 32

### Rear mounting options

For use when installing TANDEM runners in face frame cabinets. Not necessary for frameless cabinet installation.



page 34

### Accessories



page 38

### Concealed Runner Template

A required assembly aid for the pre-boring of TANDEM locking device screw holes and rear hook holes

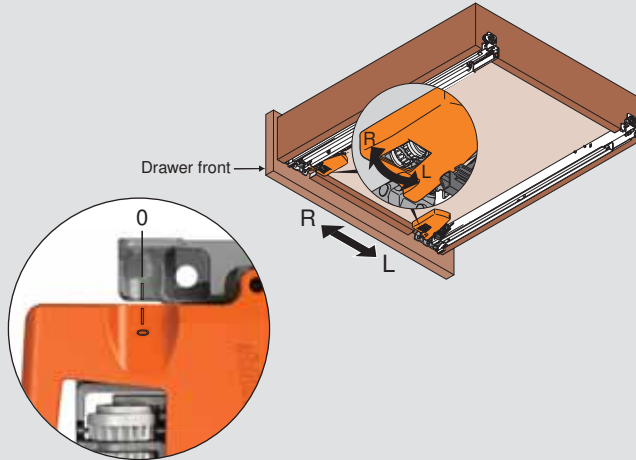


page 40

## Front side-to-side adjustment

- 1 Rotate side-to-side adjustment left or right equally on both locking devices. Drawer front moves in the same direction as rotation.

**T51.1901.xx** with side-to-side adjustment

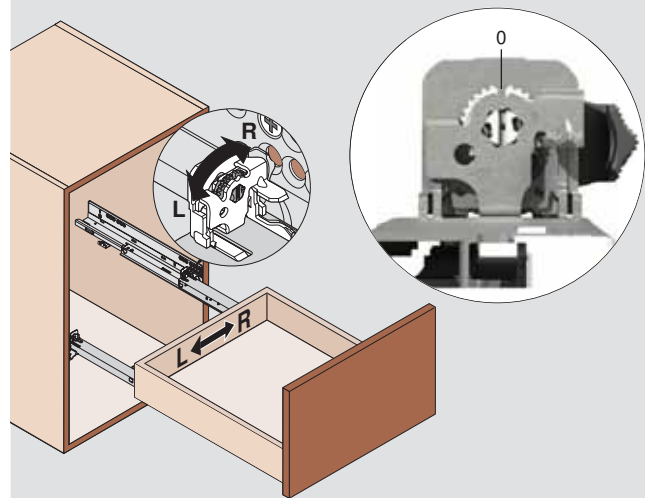


Maximum **1.5** (1/16") to left or right (tool-free)

**NOTE:** Not available on T51.x8xx locking devices

## Rear side-to-side adjustment

- 2 After front side-to-side adjustment is made with the locking devices, rotate the rear side-to-side adjustment left or right to re-align the back of the drawer box with the front. Drawer back moves in the same direction as rotation.



Maximum **1.5** (1/16") to left or right (tool-free)

**NOTE:** The left rear hook is a different design and allows for drawer width tolerances

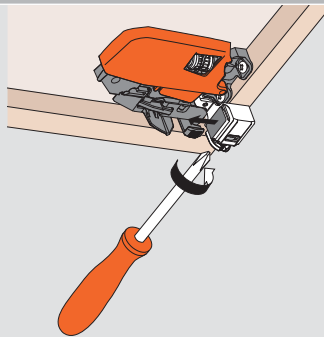
## Depth adjustable locking device

Locking device

**T51.1901.PS**

with side-to-side, height and depth adjustment

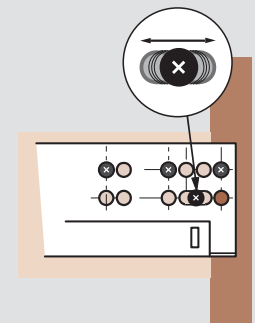
Turning the adjustment screw allows for up to **2.5** (3/32") out adjustment



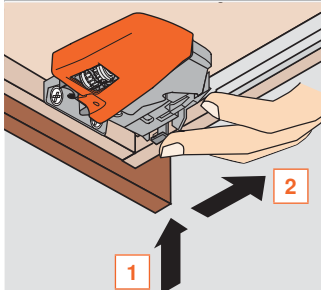
page 32

## Depth adjustment on runner

TANDEM 563 and 569 runners feature elongated holes that allow  $\pm 4.5$  (3/16") depth adjustment



## Height adjustment



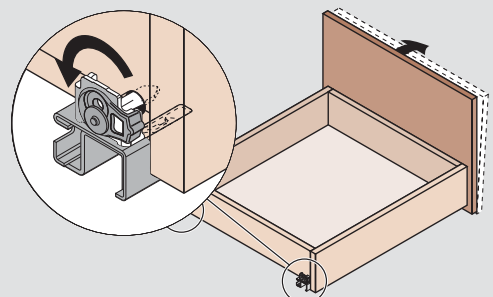
- 1 Press up on adjustment tab
- 2 Push toward back of drawer

Maximum **3** (1/8") rise of drawer front (tool-free)

**NOTE:** Height adjustment available on all TANDEM locking devices

## Tilt adjustment

Rotate the tilt adjustment lever on the rear of each runner to tilt the top of the drawer front forward



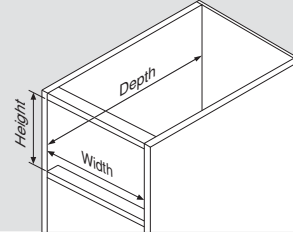
Maximum **5** (3/16") rise of drawer back (tool-free)

### Step 1

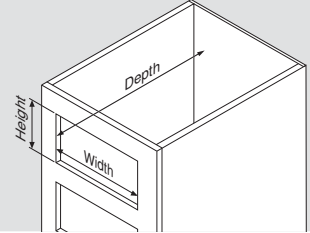
#### Measure cabinet opening

Cabinet opening measurements are needed to determine drawer box size.

#### Frameless cabinet



#### Frame cabinet



### Step 2

#### Select TANDEM runners

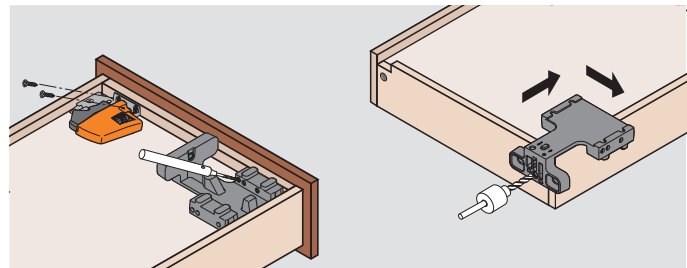
Choose the TANDEM runner that best fits your desired application, drawer side thickness, load capacity and cabinet depth. Then go to the corresponding catalog page for more specific information.

Drawer length	Full extension	Full extension with BLUMOTION		Heavy duty full extension with BLUMOTION	
	Maximum drawer thickness	Maximum drawer thickness	Maximum drawer thickness	Maximum drawer thickness	Maximum drawer thickness
	5/8"	5/8"	3/4"	5/8"	3/4"
9"					
12"		563H			
15"			563F		
18"		563H and 563.		569H	569F
21"	562H				
24"				569.	569A
27"					
30"					
Capacity static/dynamic	100/75 lb	100/90 lb*		150/135 lb*	

### Step 3

#### Preparing drawer boxes

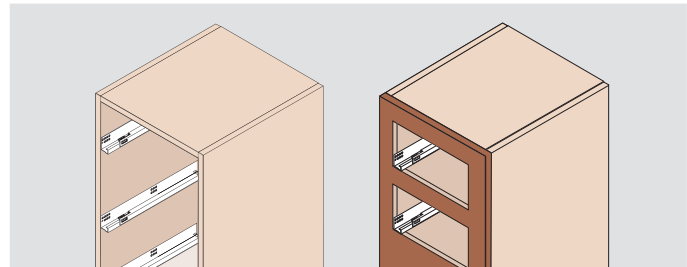
Build drawers according to the specifications given for the TANDEM runners you chose and the measurements determined in Step 1. Install appropriate locking devices and bore holes to accept rear hooks.



### Step 4

#### Attach runners to cabinet

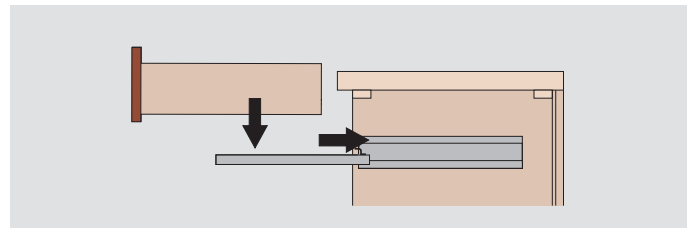
Using the mounting information given for the TANDEM runners you chose, mount the TANDEM runners in the cabinet.



### Step 5

#### Insert drawers

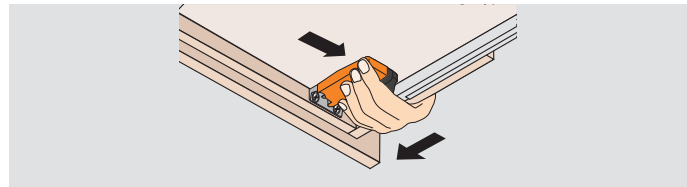
Extend the runners fully. Place the drawer on the runners and close. The locking devices automatically engage with the runners. Make adjustments if necessary.



### Step 6

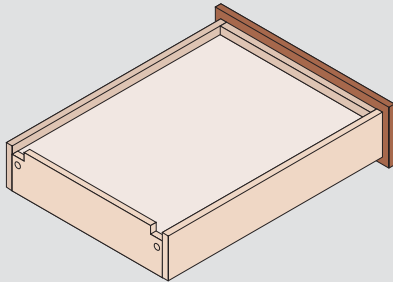
#### Drawer removal

Squeeze orange handles on locking devices and pull drawer straight out and up.



## Rear Notching

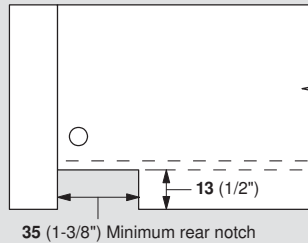
### Dimensions



Drawers must be notched in the back to accommodate TANDEM runners

**NOTE:** TIP-ON for TANDEM plus requires 85 (3-11/32") notch

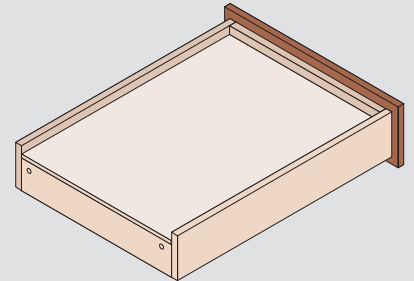
### Rear view



The notches must be flush with the drawer sides and bottom

page 36

### Option – no notching

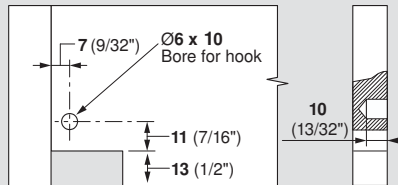


Make the back panel shorter and extend the drawer bottom to the back of the drawer

## Rear Boring

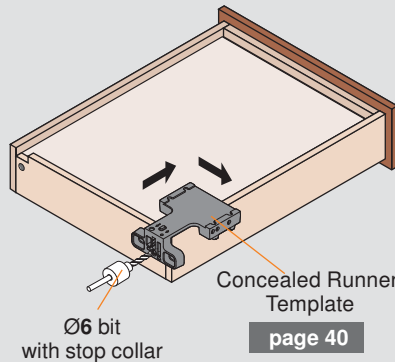
### Dimensions

#### Rear view



Drawers require Ø6 holes bored on each side of the back panel to accept the hooks on the back of TANDEM runners

### Boring



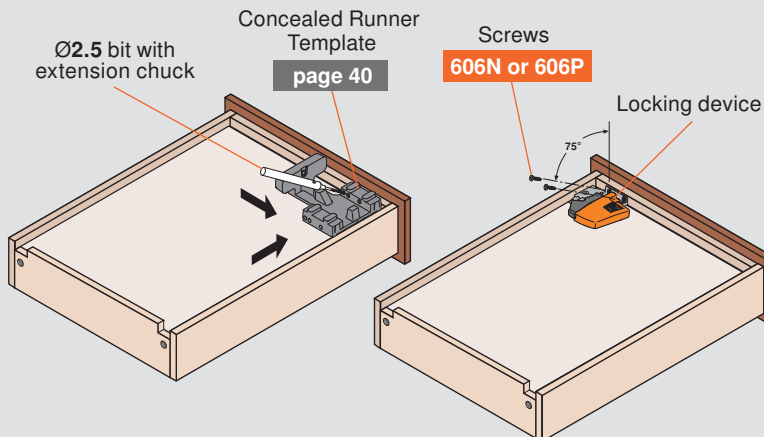
page 40

- 1 Place template over the drawer side
- 2 Position template so that the center rib rests against the inside face of the drawer side
- 3 Set stop collar on Ø6 bit so that it will bore 10 (13/32") deep
- 4 Hold template firmly and bore hole
- 5 Repeat on other side

**NOTE:** Using the T65.1600.01 Concealed Runner Template is highly recommended

## Locking Devices

### Installation



- 1 Position the Ø2.5 drill bit into the extension chuck so that it will bore 10 (13/32") deep
- 2 Place template into the front corner of the drawer
- 3 Bore two holes and repeat on other side
- 4 Attach locking devices with #6 x 5/8" deep thread wood screws (606N or 606P)

**NOTE:** The mounting screws must go in at a precise angle and the locking device must fit flush to the drawer bottom to ensure proper function of the complete drawer system

**NOTE:** Using the T65.1600.01 Concealed Runner Template is highly recommended

## TANDEM plus BLUMOTION



## TANDEM plus BLUMOTION 563.

### Application



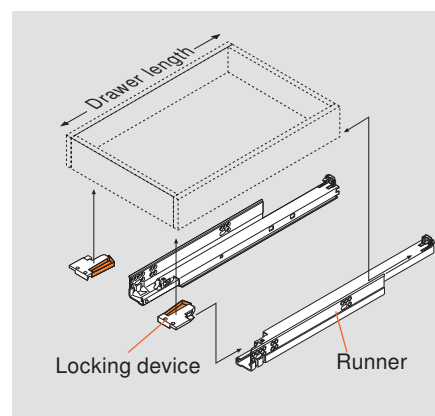
### Features

- Four-dimensional adjustment
- Elongated holes for depth adjustment
- Bottom mount holes
- 100 lb static load capacity

### Description

- Full extension concealed runners
- Frameless or blocked-out face frame cabinets
- BLUMOTION soft closing
- TANDEM smooth running action
- Available in 18" and 21" lengths
- 13 (1/2") to 16 (5/8") drawer thickness
- Made in the USA

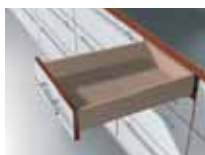
### Basic Components



### Other Applications



Inset drawer pg 22



Narrow drawer pg 24



Roll-out shelf pg 28



Bottom mount pg 29

### Components

#### Runner set

One set required per drawer



For overall cabinet depth	Drawer length	TANDEM plus BLUMOTION
610 (24")	533 (21")	563.5330B
533 (21")	457 (18")	563.4570B
Wood screw for installation		606N or 606P
System screw for installation		662.1150.HG

#### Standard locking device with side-to-side adjustment



- One right and one left required per drawer
- Captive right and self-aligning left device
- Self-adjusting drawer length tolerance
- Steel base with synthetic, spring-loaded release levers
- Minimum inside drawer width 170 (6-11/16")
- Height adjustment +3 (1/8")
- Side-to-side adjustment  $\pm 1.5$  (1/16")
- For use with 563/569 series runners only or other options see page 32

Part no.

Right locking device **T51.1901 R**

Installation Left locking device **T51.1901 L**

page 11 Installation screw **606N or 606P**

**NOTE:** For 563. series runners, rear brackets and sockets cannot be used. Cabinet sides must be blocked-out flush with the inside of the frame. See page 13.

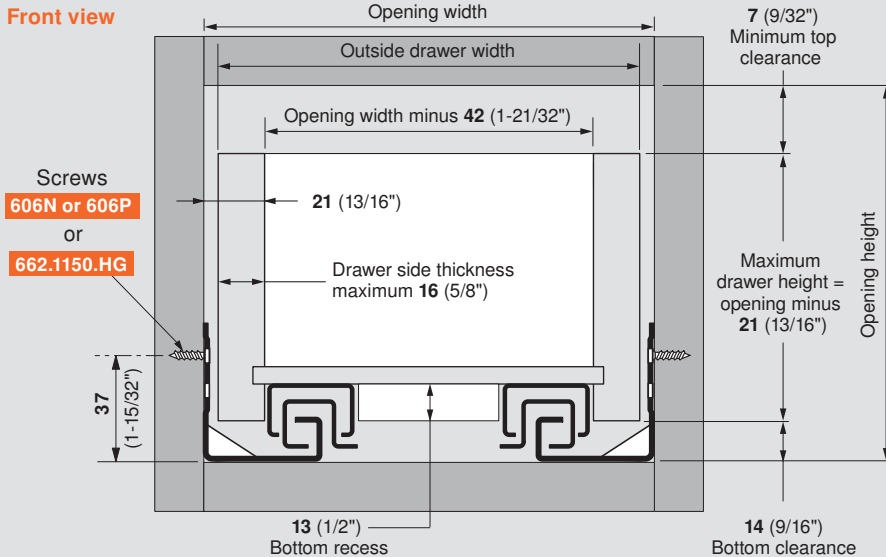
## Drawer and Cabinet Specifications

Maximum drawer thickness	16 (5/8")
Lengths available	18" - 21"
Static load capacity	100 lb

## TANDEM plus BLUMOTION



### Drawer box specifications



**NOTE:** Drawer side material thickness may vary. Accurate measurement of drawer side material thickness should be used when calculating outside drawer width using the table below. Inside drawer width **must** equal opening width minus 42 (1-21/32") for TANDEM to align and function optimally.

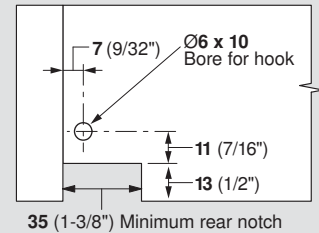
#### Calculating outside drawer width

For drawer side thickness	16 (5/8")	15 (19/32")	14 (9/16")	13 (1/2")	12 (15/32")
Deduct from opening width	10 (13/32")	12 (15/32")	14 (9/16")	16 (5/8")	18 (23/32")

**Example:** For 21" opening width and a 5/8" thick drawer, 21" minus 13/32" = 20-19/32" drawer width

### Drawer back preparation

#### Rear view



### Runner comparison

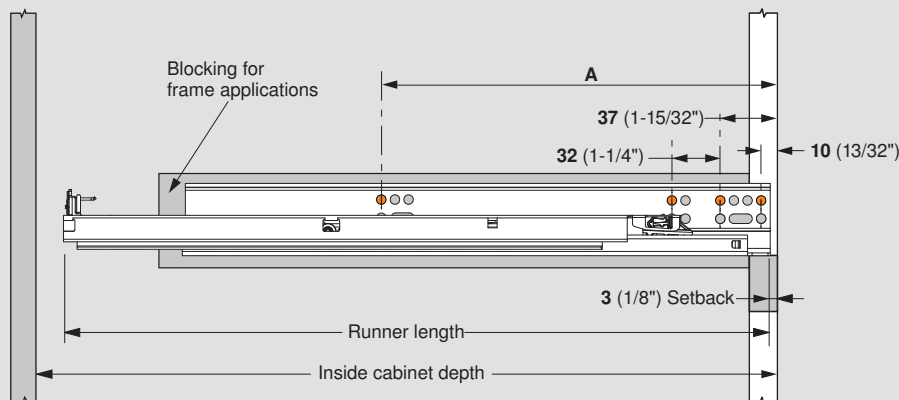
#### Side view



**NOTE:** Same hole pattern as the 563H

### Runner mounting specifications

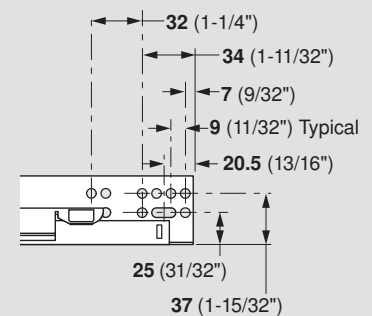
#### Side view



**NOTE:** The orange dots indicate fixing screw locations required to meet specified load ratings

TANDEM plus BLUMOTION	Drawer length	Minimum inside cabinet depth	Runner length	Screw location
				A
563.5330B	533 (21")	557 (21-15/16")	548 (21-9/16")	261 (10-9/32")
563.4570B	457 (18")	480 (18-29/32")	471 (18-17/32")	261 (10-9/32")

#### Runner close-up



**NOTE:** Elongated holes are for  $\pm 4.5$  (3/16") depth adjustment only. Additional screws must be used to secure the runner to the cabinet.

## TANDEM plus BLUMOTION



## TANDEM plus BLUMOTION 563H

### Application



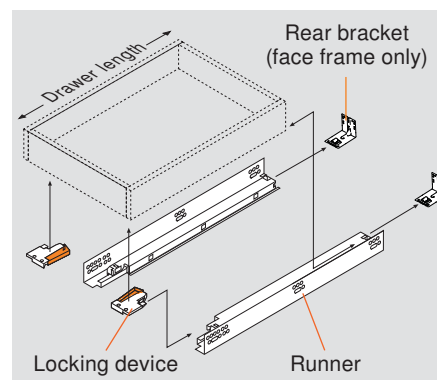
### Features

- Four-dimensional adjustment
- Elongated holes for depth adjustment
- Bottom mount holes on 15", 18" and 21"
- 100 lb static load capacity

### Description

- Full extension concealed runners
- Face frame or frameless cabinets
- BLUMOTION soft closing
- TANDEM smooth running action
- Available in 9" to 21" lengths
- 13 (1/2") to 16 (5/8") drawer thickness
- Made in the USA

### Basic Components



### Other Applications



Inset drawer pg 22



Narrow drawer pg 24



Roll-out shelf pg 28



Bottom mount pg 29

### Components

#### Runner set

One set required per drawer



For overall cabinet depth	Drawer length	TANDEM plus BLUMOTION
610 (24")	533 (21")	563H5330B
533 (21")	457 (18")	563H4570B
457 (18")	381 (15")	563H3810B
381 (15")	305 (12")	563H3050B
305 (12")	229 (9")	563H2290B10
Wood screw for installation		606N or 606P
System screw for installation		662.1150.HG

#### Standard locking device with side-to-side adjustment



- One right and one left required per drawer
- Captive right and self-aligning left device
- Self-adjusting drawer length tolerance
- Steel base with synthetic, spring-loaded release levers
- Minimum inside drawer width 170 (6-11/16")
- Height adjustment +3 (1/8")
- Side-to-side adjustment  $\pm 1.5$  (1/16")
- For use with 563/569 series runners only
- For other options see page 32

Part no.

Right locking device **T51.1901 R**

Installation Left locking device **T51.1901 L**

page 11 Installation screw **606N or 606P**

#### Rear mounting bracket for frame cabinets



For use when installing TANDEM runners in face frame cabinets. Not necessary for frameless cabinet installation.

- Two required per drawer
- Depth and lateral self-alignment
- Zinc-coated steel
- For 9" TANDEM rear attachment options see page 35

Part no.

Non-handed bracket **295.3750.02**

Installation screw **606N or 606P**

## Drawer and Cabinet Specifications

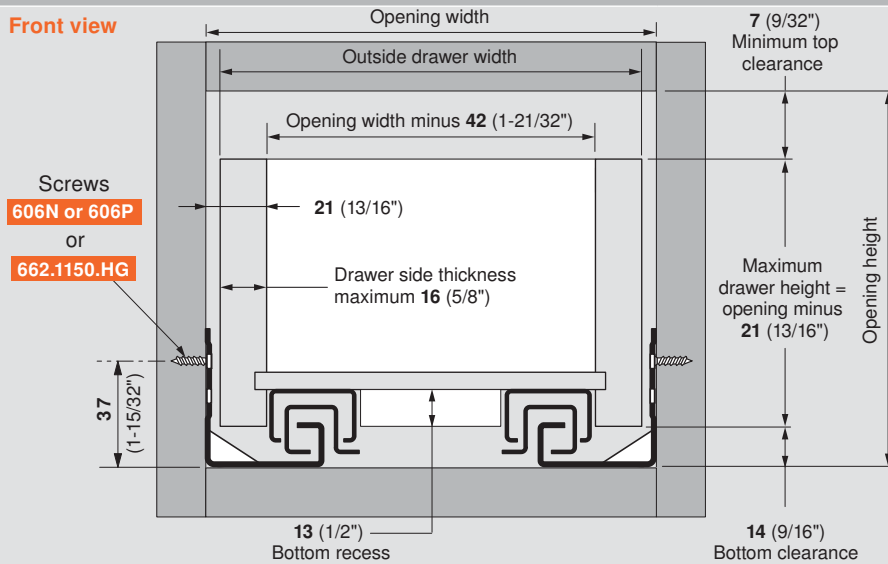
Maximum drawer thickness	16 (5/8")
Lengths available	9" - 21"
Static load capacity	100 lb

## TANDEM plus BLUMOTION



### Drawer box specifications

#### Front view



**NOTE:** Drawer side material thickness may vary. Accurate measurement of drawer side material thickness should be used when calculating outside drawer width using the table below. Inside drawer width **must** equal opening width minus 42 (1-21/32") for TANDEM to align and function optimally.

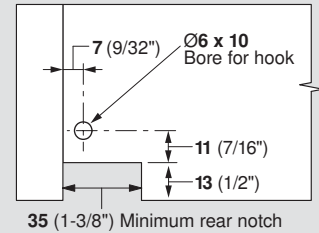
#### Calculating outside drawer width

For drawer side thickness	16 (5/8")	15 (19/32")	14 (9/16")	13 (1/2")	12 (15/32")
Deduct from opening width	10 (13/32")	12 (15/32")	14 (9/16")	16 (5/8")	18 (23/32")

**Example:** For 21" opening width and a 5/8" thick drawer, 21" minus 13/32" = 20-19/32" drawer width

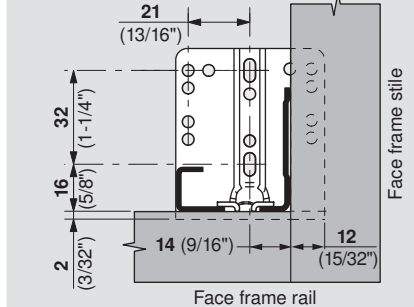
### Drawer back preparation

#### Rear view



### Rear mounting bracket

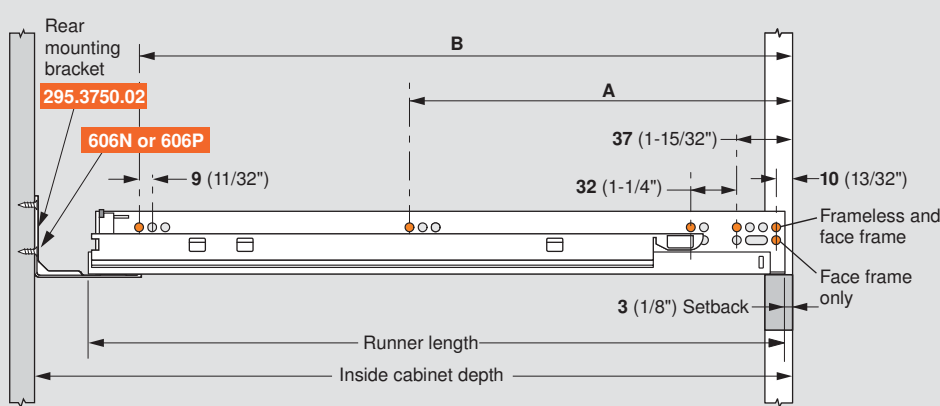
#### Front view



**NOTE:** For frame applications, use a minimum of three screws per bracket

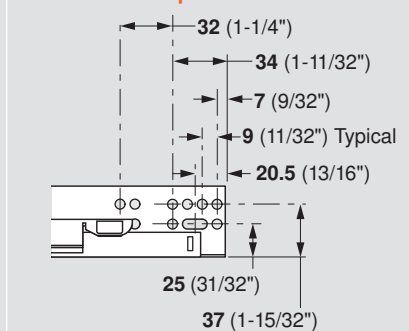
### Runner mounting specifications

#### Side view



**NOTE:** The orange dots indicate fixing screw locations required to meet specified load ratings

#### Runner close-up



**NOTE:** Elongated holes are for ±4.5 (3/16") depth adjustment only. Additional screws must be used to secure the runner to the cabinet.

TANDEM plus BLUMOTION	Drawer length	Inside cabinet depth with rear attachment		Runner length	Screw locations for frameless cabinets	
		Maximum	Minimum		A	B
563H5330B	533 (21")	599 (23-19/32")	557 (21-15/16")	548 (21-9/16")	261 (10-9/32")	517 (20-11/32")
563H4570B	457 (18")	522 (20-9/16")	480 (18-29/32")	471 (18-17/32")	261 (10-9/32")	453 (17-27/32")
563H3810B	381 (15")	446 (17-9/16")	404 (15-29/32")	395 (15-9/16")	165 (6-1/2")	357 (14-1/16")
563H3050B	305 (12")	370 (14-9/16")	328 (12-29/32")	319 (12-9/16")	165 (6-1/2")	261 (10-9/32")
563H2290B10	229 (9")	299 (11-25/32")	266 (10-15/32")	259 (10-3/16")	133 (5-1/4")	229 (9")

## TANDEM plus BLUMOTION



## TANDEM plus BLUMOTION 563F

### Application



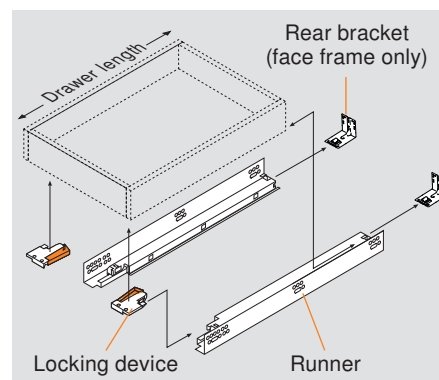
### Features

- Four-dimensional adjustment
- Elongated holes for depth adjustment
- Bottom mount holes on 15", 18" and 21"
- 100 lb static load capacity

### Description

- Full extension concealed runners
- Face frame or frameless cabinets
- BLUMOTION soft closing
- TANDEM smooth running action
- Available in 9" to 21" lengths
- 16 (5/8") to 19 (3/4") drawer thickness
- Made in the USA

### Basic Components



### Other Applications



Inset drawer pg 22



Narrow drawer pg 24



Roll-out shelf pg 28



Bottom mount pg 29

### Components

#### Runner set

One set required per drawer



For overall cabinet depth	Drawer length	TANDEM plus BLUMOTION
610 (24")	533 (21")	563F5330B
533 (21")	457 (18")	563F4570B
457 (18")	381 (15")	563F3810B
381 (15")	305 (12")	563F3050B
305 (12")	229 (9")	563F2290B10
Wood screw for installation		606N or 606P
System screw for installation		662.1150.HG

#### Standard locking device with side-to-side adjustment



- One right and one left required per drawer
- Captive right and self-aligning left device
- Self-adjusting drawer length tolerance
- Steel base with synthetic, spring-loaded release levers
- Minimum inside drawer width 170 (6-11/16")
- Height adjustment +3 (1/8")
- Side-to-side adjustment  $\pm 1.5$  (1/16")
- For use with 563/569 series runners only
- For other options see page 32

Part no.

Right locking device **T51.1901 R**

Installation Left locking device **T51.1901 L**

page 11 Installation screw **606N or 606P**

#### Rear mounting bracket for frame cabinets



For use when installing TANDEM runners in face frame cabinets. Not necessary for frameless cabinet installation.

- Two required per drawer
- Depth and lateral self-alignment
- Zinc-coated steel
- For 9" TANDEM rear attachment options see page 35

Part no.

Non-handed bracket **295.3750.02**

Installation screw **606N or 606P**

## Drawer and Cabinet Specifications

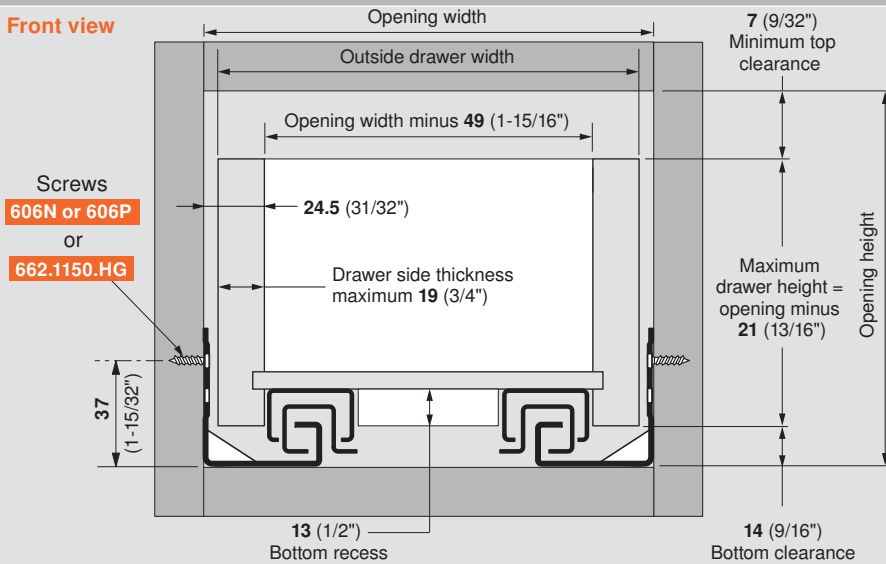
Maximum drawer thickness	19 (3/4")
Lengths available	9" - 21"
Static load capacity	100 lb

## TANDEM plus BLUMOTION



### Drawer box specifications

#### Front view



**NOTE:** Drawer side material thickness may vary. Accurate measurement of drawer side material thickness should be used when calculating outside drawer width using the table below. Inside drawer width **must** equal opening width minus 49 (1-15/16") for TANDEM to align and function optimally.

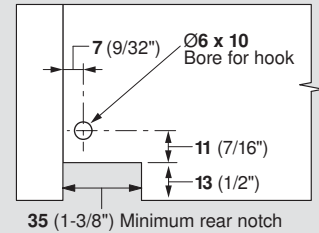
#### Calculating outside drawer width

For drawer side thickness	19 (3/4")	18 (23/32")	17 (21/32")	16 (5/8")	15 (19/32")
Deduct from opening width	11 (7/16")	13 (1/2")	15 (19/32")	17 (21/32")	19 (3/4")

**Example:** For 21" opening width and a 3/4" thick drawer, 21" minus 7/16" = 20-9/16" drawer width

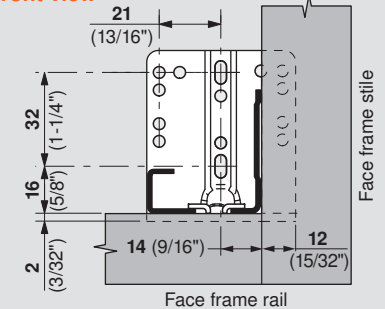
### Drawer back preparation

#### Rear view



### Rear mounting bracket

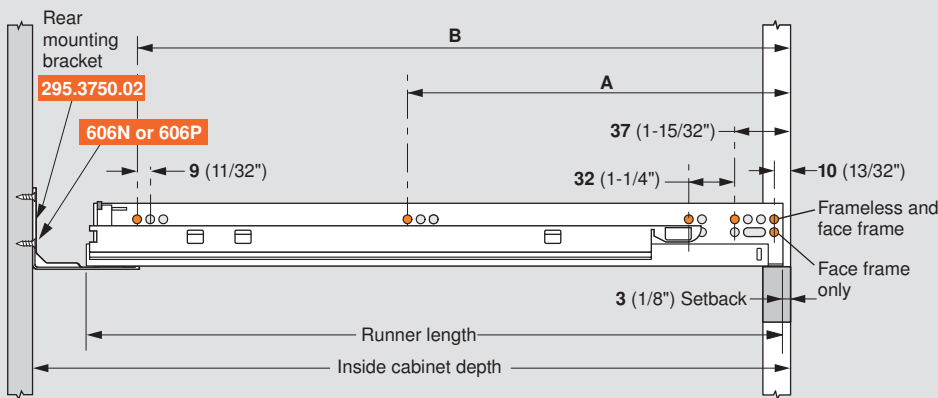
#### Front view



**NOTE:** For frame applications, use a minimum of three screws per bracket

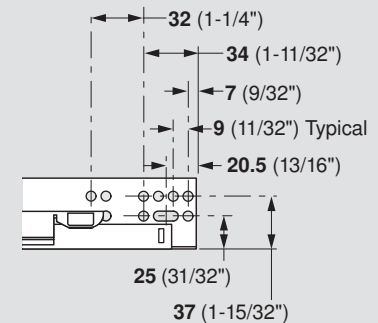
### Runner mounting specifications

#### Side view



**NOTE:** The orange dots indicate fixing screw locations required to meet specified load ratings

#### Runner close-up



**NOTE:** Elongated holes are for ±4.5 (3/16") depth adjustment only. Additional screws must be used to secure the runner to the cabinet.

TANDEM plus BLUMOTION	Drawer length	Inside cabinet depth with rear attachment		Runner length	Screw locations for frameless cabinets	
		Maximum	Minimum		A	B
563F5330B	533 (21")	599 (23-19/32")	557 (21-15/16")	548 (21-9/16")	261 (10-9/32")	517 (20-11/32")
563F4570B	457 (18")	522 (20-9/16")	480 (18-29/32")	471 (18-17/32")	261 (10-9/32")	453 (17-27/32")
563F3810B	381 (15")	446 (17-9/16")	404 (15-29/32")	395 (15-9/16")	165 (6-1/2")	357 (14-1/16")
563F3050B	305 (12")	370 (14-9/16")	328 (12-29/32")	319 (12-9/16")	165 (6-1/2")	261 (10-9/32")
563F2290B10	229 (9")	299 (11-25/32")	266 (10-15/32")	259 (10-3/16")	133 (5-1/4")	229 (9")

## TANDEM plus BLUMOTION



## TANDEM plus BLUMOTION 569H/569. Heavy Duty

### Application



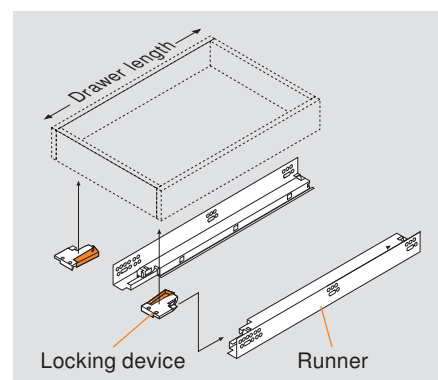
### Features

- Four-dimensional adjustment
- Elongated holes for depth adjustment
- 150 lb static load capacity

### Description

- Full extension concealed runners
- Frameless or blocked-out face frame cabinets
- BLUMOTION soft closing
- TANDEM smooth running action
- Available in 18" to 30" lengths
- 13 (1/2") to 16 (5/8") drawer thickness

### Basic Components



### Other Applications



Inset drawer pg 22



SPACE CORNER pg 30

### Components

#### Runner set

One set required per drawer



For overall cabinet depth	Drawer length	TANDEM plus BLUMOTION
838 (33")	762 (30")	569.7620B
762 (30")	686 (27")	569.6860B
686 (27")	610 (24")	569.6100B
610 (24")	533 (21")	569H5330B
533 (21")	457 (18")	569H4570B
Wood screw for installation		606N or 606P
System screw for installation		662.1150.HG

#### Standard locking device with side-to-side adjustment



- One right and one left required per drawer
- Captive right and self-aligning left device
- Self-adjusting drawer length tolerance
- Steel base with synthetic, spring-loaded release levers
- Minimum inside drawer width 170 (6-11/16")
- Height adjustment +3 (1/8")
- Side-to-side adjustment  $\pm 1.5$  (1/16")
- For use with 563/569 series runners only
- For other options see page 32

Part no.

Right locking device **T51.1901 R**

Installation Left locking device **T51.1901 L**

page 11 Installation screw **606N or 606P**

**NOTE:** For heavy duty applications, rear brackets and sockets cannot be used. Cabinet sides must be blocked-out flush with the inside of the frame. See page 19.

## Drawer and Cabinet Specifications

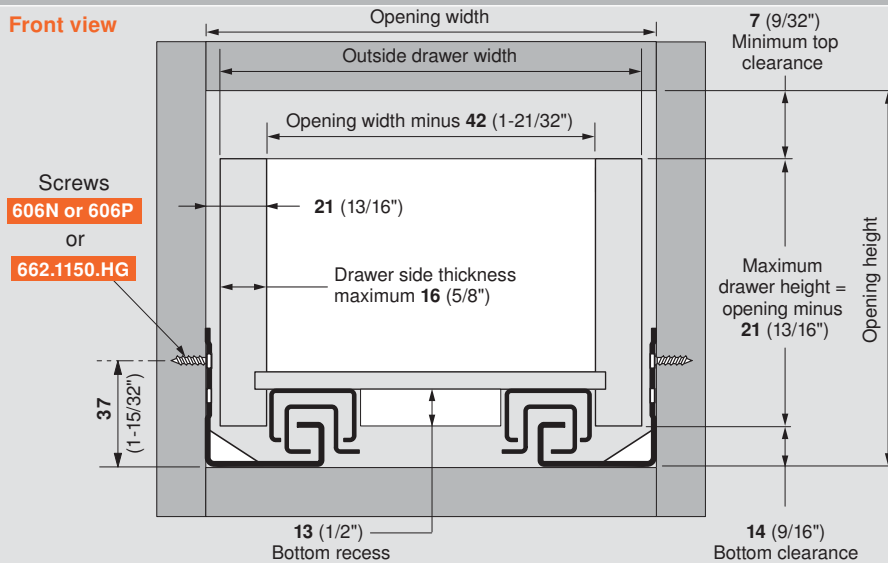
Maximum drawer thickness	16 (5/8")
Lengths available	18" - 30"
Static load capacity	150 lb

## TANDEM plus BLUMOTION



### Drawer box specifications

#### Front view



**NOTE:** Drawer side material thickness may vary. Accurate measurement of drawer side material thickness should be used when calculating outside drawer width using the table below. Inside drawer width **must** equal opening width minus 42 (1-21/32") for TANDEM to align and function optimally.

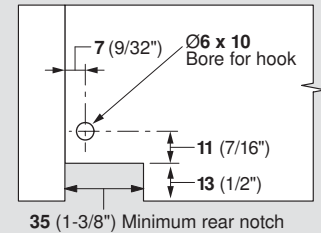
#### Calculating outside drawer width

For drawer side thickness	16 (5/8")	15 (19/32")	14 (9/16")	13 (1/2")	12 (15/32")
Deduct from opening width	10 (13/32")	12 (15/32")	14 (9/16")	16 (5/8")	18 (23/32")

**Example:** For 21" opening width and a 5/8" thick drawer, 21" minus 13/32" = 20-19/32" drawer width

### Drawer back preparation

#### Rear view



### Runner comparison

#### Side view

#### 569H

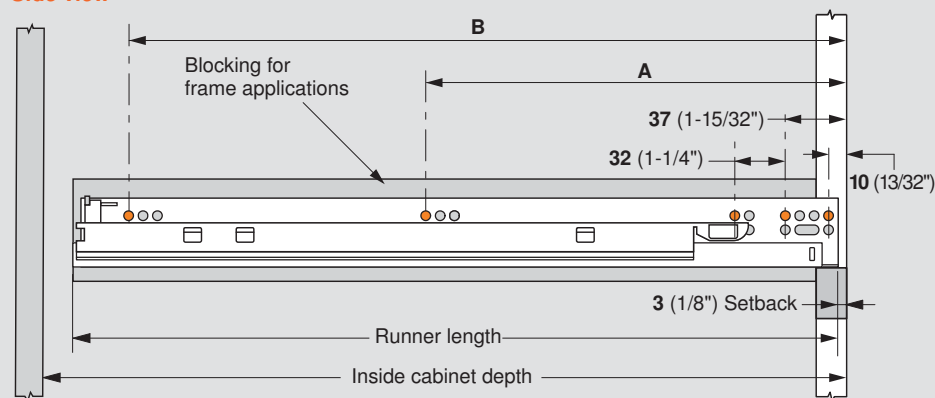


#### 569.



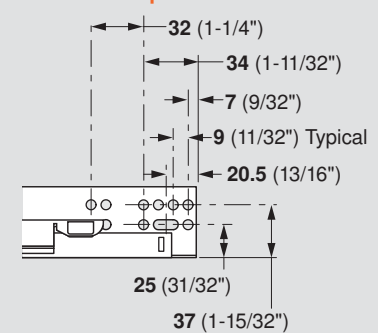
### Runner mounting specifications

#### Side view



**NOTE:** The orange dots indicate fixing screw locations required to meet specified load ratings

#### Runner close-up



**NOTE:** Elongated holes are for ±4.5 (3/16") depth adjustment only. Additional screws must be used to secure the runner to the cabinet.

TANDEM plus BLUMOTION	Drawer length	Minimum inside cabinet depth	Runner length	Screw locations for frameless cabinets	
				A	B
569.7620B	762 (30")	786 (30-15/16")	777 (30-19/32")	261 (10-9/32")	389 (15-5/16")
569.6860B	686 (27")	709 (27-29/32")	700 (27-9/16")	261 (10-9/32")	389 (15-5/16")
569.6100B	610 (24")	634 (24-31/32")	625 (24-19/32")	261 (10-9/32")	389 (15-5/16")
569H5330B	533 (21")	557 (21-15/16")	548 (21-9/16")	261 (10-9/32")	517 (20-11/32")
569H4570B	457 (18")	480 (18-29/32")	471 (18-17/32")	261 (10-9/32")	453 (17-27/32")

## TANDEM plus BLUMOTION



## TANDEM plus BLUMOTION 569F/569A Heavy Duty

### Application



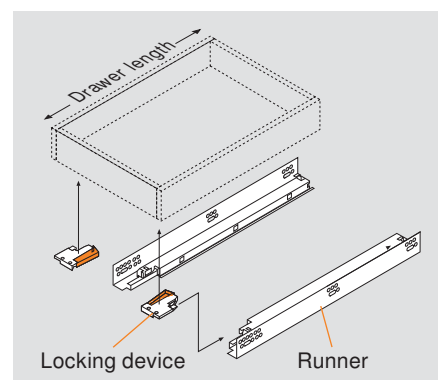
### Features

- Four-dimensional adjustment
- Elongated holes for depth adjustment
- 150 lb static load capacity

### Description

- Full extension concealed runners
- Frameless or blocked-out face frame cabinets
- BLUMOTION soft closing
- TANDEM smooth running action
- Available in 18" to 30" lengths
- 16 (5/8") to 19 (3/4") drawer thickness

### Basic Components



### Other Applications



Inset drawer

pg 22



SPACE CORNER

pg 30

### Components

#### Runner set

One set required per drawer



For overall cabinet depth	Drawer length	TANDEM plus BLUMOTION
838 (33")	762 (30")	569A7620B
762 (30")	686 (27")	569A6860B
686 (27")	610 (24")	569A6100B
610 (24")	533 (21")	569F5330B
533 (21")	457 (18")	569F4570B
Wood screw for installation		606N or 606P
System screw for installation		662.1150.HG

#### Standard locking device with side-to-side adjustment



- One right and one left required per drawer
- Captive right and self-aligning left device
- Self-adjusting drawer length tolerance
- Steel base with synthetic, spring-loaded release levers
- Minimum inside drawer width 170 (6-11/16")
- Height adjustment +3 (1/8")
- Side-to-side adjustment  $\pm 1.5$  (1/16")
- For use with 563/569 series runners only
- For other options see page 32

Part no.

Right locking device **T51.1901 R**

Installation Left locking device **T51.1901 L**

page 11 Installation screw **606N or 606P**

**NOTE:** For heavy duty applications, rear brackets and sockets cannot be used. Cabinet sides must be blocked-out flush with the inside of the frame. See page 21.

## Drawer and Cabinet Specifications

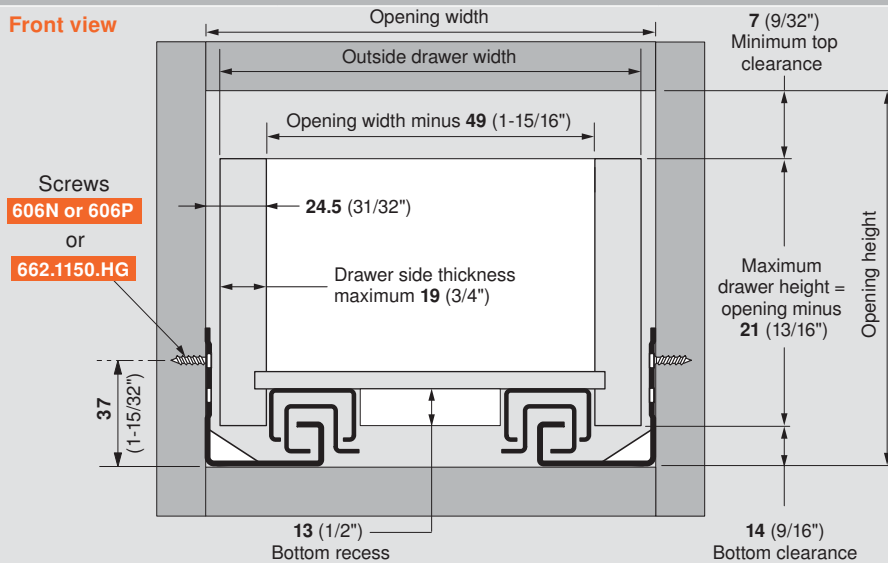
Maximum drawer thickness	19 (3/4")
Lengths available	18" - 30"
Static load capacity	150 lb

## TANDEM plus BLUMOTION



### Drawer box specifications

#### Front view



**NOTE:** Drawer side material thickness may vary. Accurate measurement of drawer side material thickness should be used when calculating outside drawer width using the table below. Inside drawer width **must** equal opening width minus 49 (1-15/16") for TANDEM to align and function optimally.

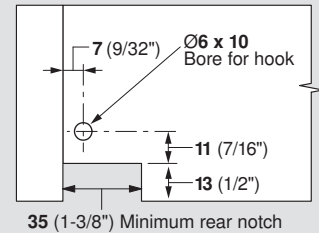
#### Calculating outside drawer width

For drawer side thickness	19 (3/4")	18 (23/32")	17 (21/32")	16 (5/8")	15 (19/32")
Deduct from opening width	11 (7/16")	13 (1/2")	15 (19/32")	17 (21/32")	19 (3/4")

**Example:** For 21" opening width and a 3/4" thick drawer, 21" minus 7/16" = 20-9/16" drawer width

### Drawer back preparation

#### Rear view



### Runner comparison

#### Side view

#### 569F

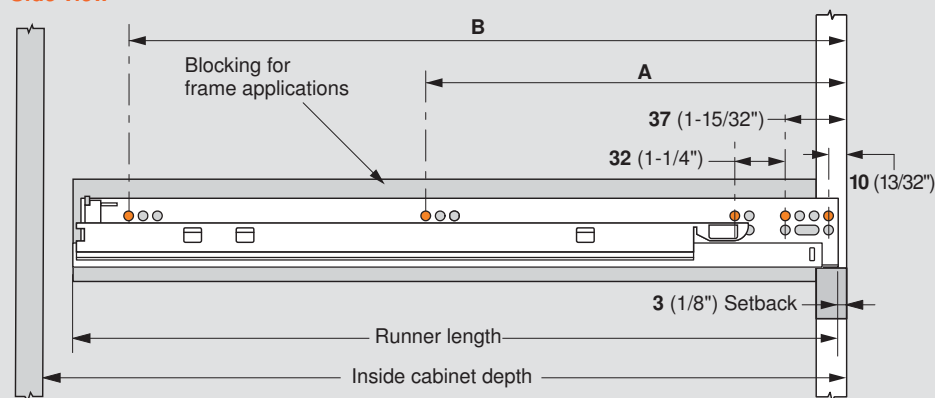


#### 569A



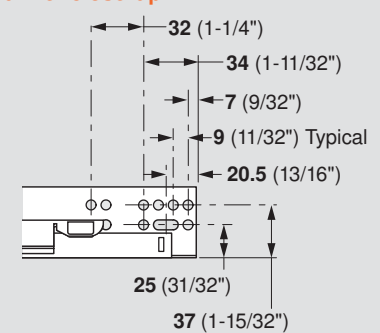
### Runner mounting specifications

#### Side view



**NOTE:** The orange dots indicate fixing screw locations required to meet specified load ratings

#### Runner close-up



**NOTE:** Elongated holes are for ±4.5 (3/16") depth adjustment only. Additional screws must be used to secure the runner to the cabinet.

TANDEM plus BLUMOTION	Drawer length	Minimum inside cabinet depth	Runner length	Screw locations for frameless cabinets	
				A	B
569A7620B	762 (30")	786 (30-15/16")	777 (30-19/32")	261 (10-9/32")	389 (15-5/16")
569A6860B	686 (27")	709 (27-29/32")	700 (27-9/16")	261 (10-9/32")	389 (15-5/16")
569A6100B	610 (24")	634 (24-31/32")	625 (24-19/32")	261 (10-9/32")	389 (15-5/16")
569F5330B	533 (21")	557 (21-15/16")	548 (21-9/16")	261 (10-9/32")	517 (20-11/32")
569F4570B	457 (18")	480 (18-29/32")	471 (18-17/32")	261 (10-9/32")	453 (17-27/32")

# TANDEM plus BLUMOTION



## Inset Drawer

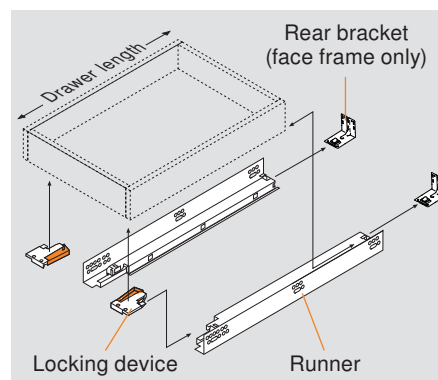
### Application



### Description

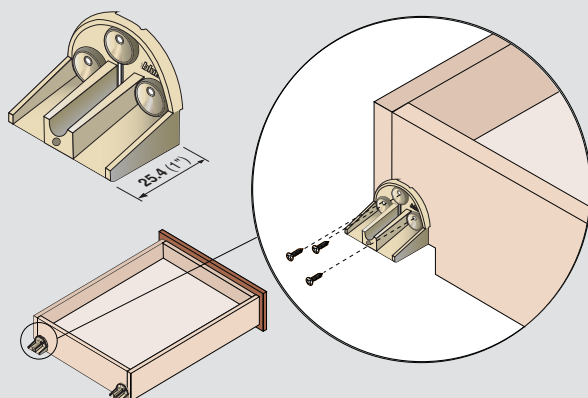
- Uses the same 563 or 569 series runner
- Requires increased setback of the runner
- Frame applications require blocking-out behind the face frame

### Basic Components



### Optional inset spacer for SERVO-DRIVE

For applications where there would not be enough space behind the drawer box to add SERVO-DRIVE due to cabinet construction, plumbing, etc.



- Two required per drawer
- Drawer box is built **25.4 (1\")** shorter in length than TANDEM specifications
- These spacers make up the difference between the drawer box and rear hook and provide additional space for installing SERVO-DRIVE
- SERVO-DRIVE boring locations and minimum inside cabinet depths move towards the cabinet face by **25.4 (1\")**

Part no.

Inset spacer

**T59.A5P0S**

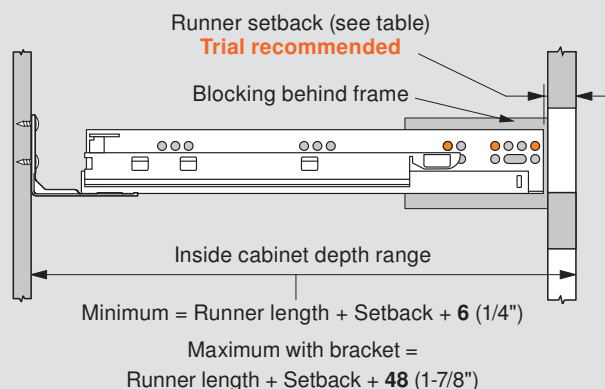
Installation screw

**606N or 606P**

### Specifications

#### Partial block-out

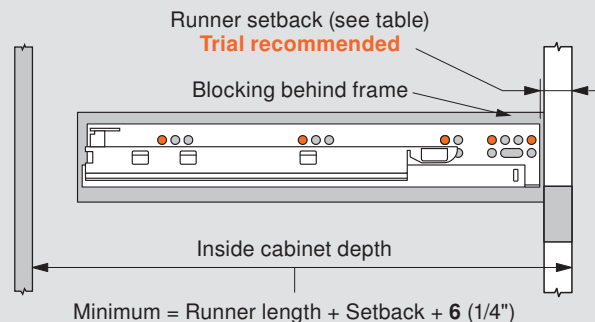
##### Side view



**NOTE:** Only for 563 H and F series runners

#### Complete block-out

##### Side view



**NOTE:** Required for 563. and 569 series runners

## Runner Setback Specifications

TANDEM plus BLUMOTION



### Runner setback when using depth adjustable locking device (T51.1901.PS)

563/569 H./		Runner setback				563/569 F/A		Runner setback									
Sub-front thickness	13 (1/2")	20 (25/32")	23 (29/32")	26 (1-1/32")	Sub-front thickness	13 (1/2")	17 (21/32")	20 (25/32")	23 (29/32")	Sub-front thickness	13 (1/2")	17 (21/32")	20 (25/32")	23 (29/32")			
	16 (5/8")	23 (29/32")	26 (1-1/32")	29 (1-5/32")		16 (5/8")	20 (25/32")	23 (29/32")	26 (1-1/32")		16 (5/8")	20 (25/32")	23 (29/32")	26 (1-1/32")			
	19 (3/4")	26 (1-1/32")	29 (1-5/32")	32 (1-1/4")		19 (3/4")	23 (29/32")	26 (1-1/32")	29 (1-5/32")		19 (3/4")	23 (29/32")	26 (1-1/32")	29 (1-5/32")			
		16 (5/8")	19 (3/4")	22 (7/8")			16 (5/8")	19 (3/4")	22 (7/8")			16 (5/8")	19 (3/4")	22 (7/8")			
		Drawer front thickness						Drawer front thickness						Drawer front thickness			

- Setbacks in this table recess the face of the drawer front inside of the cabinet 1 (1/32")
- The depth adjustment can then be used to move the drawer front out to its desired position, 2.5 (3/32") out adjustment only


#### Calculating runner setback

563/569 H./ (sub-front thickness + drawer front thickness minus 9 (11/32") = runner setback)

563/569 F/A (sub-front thickness + drawer front thickness minus 12 (15/32") = runner setback)

**NOTE:** For mounting hole position, add 7 (9/32") to runner setback

### Runner setback when using all other locking devices



563/569 H./		Runner setback				563/569 F/A		Runner setback			
Sub-front thickness	13 (1/2")	17.5 (11/16")	20.5 (13/16")	23.5 (15/16")		Sub-front thickness	13 (1/2")	14.5 (9/16")	17.5 (11/16")	20.5 (13/16")	
	16 (5/8")	20.5 (13/16")	23.5 (15/16")	26.5 (1-1/32")			16 (5/8")	17.5 (11/16")	20.5 (13/16")	23.5 (15/16")	
	19 (3/4")	23.5 (15/16")	26.5 (1-1/32")	29.5 (1-5/32")			19 (3/4")	20.5 (13/16")	23.5 (15/16")	26.5 (1-1/32")	
		16 (5/8")	19 (3/4")	22 (7/8")				16 (5/8")	19 (3/4")	22 (7/8")	
		Drawer front thickness						Drawer front thickness			

Setbacks in this table set the face of the drawer front flush with the face of the cabinet
If a depth adjustable locking device is needed, please see the locking device and table above

#### Calculating runner setback

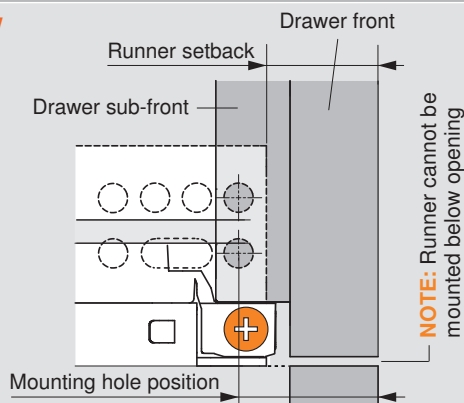
563/569 H./ (sub-front thickness + drawer front thickness minus 11.5 (7/16") = runner setback)

563/569 F/A (sub-front thickness + drawer front thickness minus 14.5 (9/16") = runner setback)

**NOTE:** For mounting hole position, add 7 (9/32") to runner setback

### Setback information

#### Side view



**NOTE:** For mounting hole position add 7 (9/32") to runner setback

# TANDEM plus BLUMOTION



## Narrow Drawer

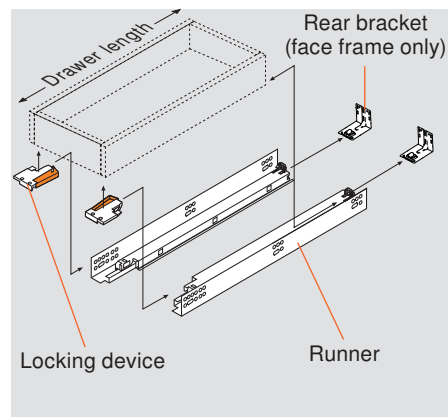
### Application



### Description

- For inside drawer widths of **95** (3-3/4") to **124** (4-7/8")
- Special narrow locking device required
- Maximum dynamic load rating for narrow drawer locking device is 25 lb
- Minimum **16** (5/8") sub-front thickness

### Basic Components



### Components

#### Runner set

One set required per drawer



Narrow drawer applications are possible with any TANDEM plus BLUMOTION runner. See the installation instructions for the runner used.

#### TANDEM plus BLUMOTION

563. series	page 12
563H series	page 14
563F series	page 16

#### Narrow drawer locking device



- One right and one left required per drawer
- For use with narrow drawers
- Maximum dynamic load capacity 25 lb
- Self-adjusting drawer length tolerance
- Vertical mount, two-piece nylon
- Minimum inside drawer width **95** (3-3/4")
- Height adjustment **+3** (1/8")
- Minimum sub-front thickness **16** (5/8")
- Designed for **13** (1/2") drawer bottom recess
- For use with 563/569 series runners only

Part no.

Right locking device **T51.0801.20 R**

Installation Left locking device **T51.0801.20 L**

page 25 Installation screw **606N or 606P**

#### Rear mounting bracket for frame cabinets



For use when installing TANDEM runners in face frame cabinets. Not necessary for frameless cabinet installation.

- Two required per drawer
- Depth and lateral self-alignment
- Zinc-coated steel
- For 9" TANDEM rear attachment options, see page 35

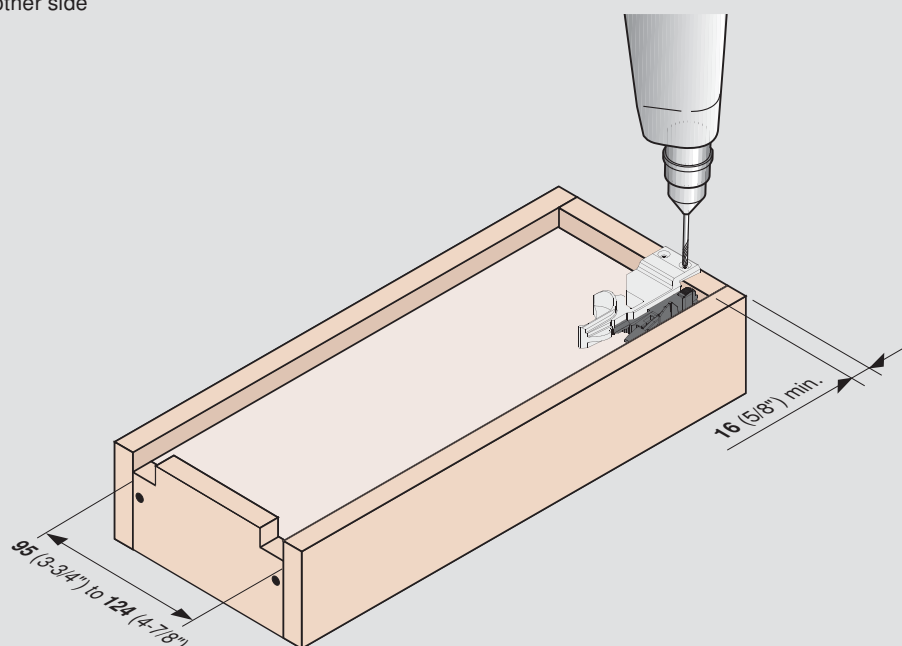
Part no.

Non-handed bracket **295.3750.02**

Installation screw **606N or 606P**

### Attach locking devices

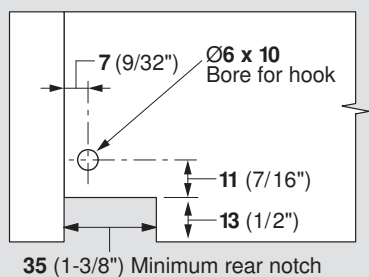
- 1 Position locking device in front corner of the drawer
- 2 Pre-bore locking device mounting screw holes with  $\varnothing 2.5$  piloting bit
- 3 Attach with two 606N or 606P screws
- 4 Repeat on the other side



**NOTE:** A minimum of 16 (5/8") sub-front thickness is required for mounting the narrow drawer locking device

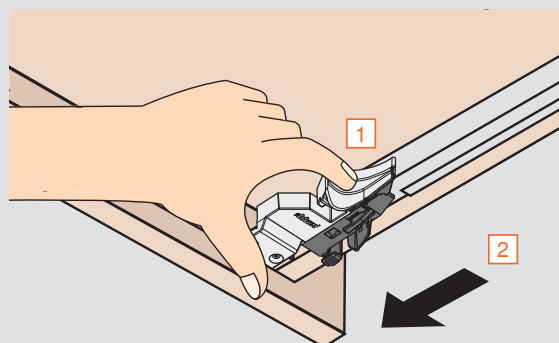
### Drawer back preparation

#### Rear view



### Drawer removal

- 1 Squeeze release levers on locking devices
- 2 Pull drawer straight out and up



## TANDEM plus BLUMOTION



### Lateral stabilizer for 563/569

#### Application



#### Description

- Increases lateral stability
- Synchronizes left and right runners to prevent drawer racking
- Ideal for wide applications using TANDEM 563/569 H/., and F/A series
- Does not increase load capacity

#### Specifications

- Frameless and blocked-out face frame applications **229** (9") to **686** (27") length drawers
- Face frame applications with rear attachment **305** (12") to **533** (21") length drawers
- Recommended for opening widths **610** (24") and wider



#### Lateral stabilizer set



#### Set includes:

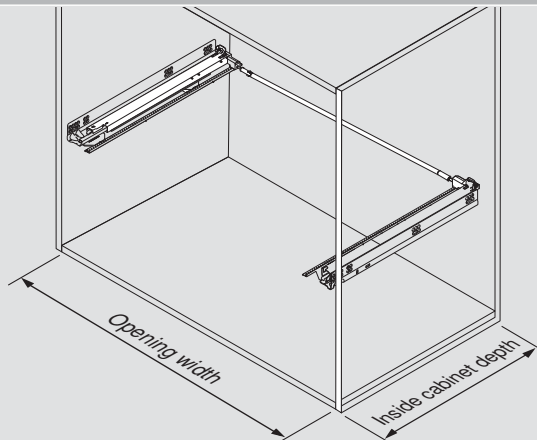
- Pinion housing (qty 2)
  - Gear rack with locating tabs (qty 2)
  - Linkage rod, length **1054** (41-1/2")
  - Pinion adapter (qty 2)
  - Locking clip (qty 2)
- Installation instructions

Part no.

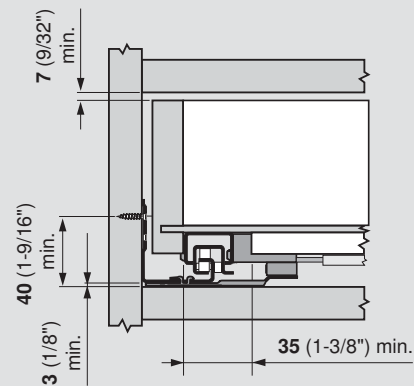
Lateral stabilizer set

**ZST.686TU01**

#### Space requirements



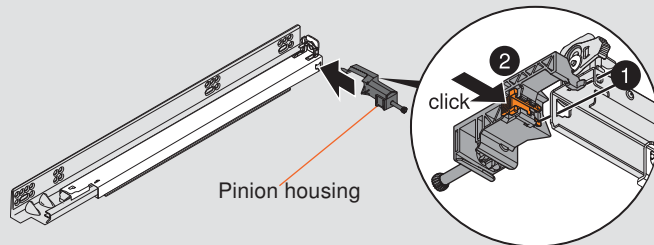
- Maximum opening width **1352** (53-7/32")
- Minimum inside cabinet depth = setback + runner length + **18** (23/32")



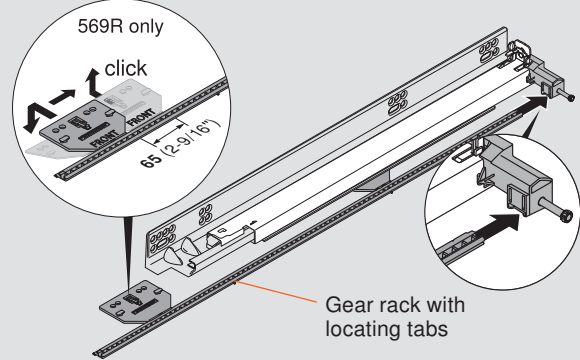
**NOTE:** TANDEM runners will sit **3** (1/8") higher when using the lateral stabilizer in bottom mount applications and may have to be raised for some bottom mount drawer applications using SERVO-DRIVE

## Step 1 – Attach left and right pinion housings

- 1 Insert locating pins into TANDEM runner
- 2 Press orange locking clips to lock into place

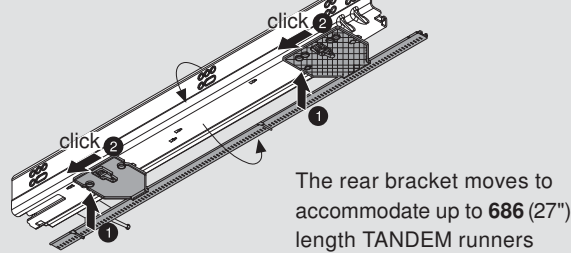


## Step 2 – Slide gear racks into pinion housings

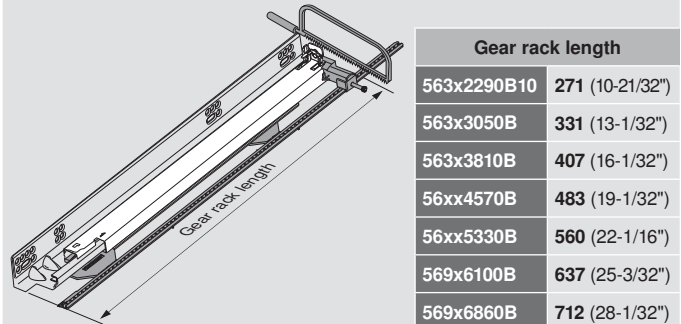


## Step 3 – Install gear racks

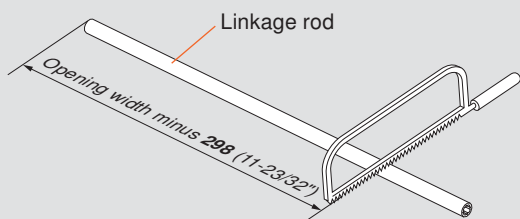
- 1 Insert locating tabs into cut-outs on bottom of runners
- 2 Slide backward to lock into place



## Step 4 – Cut gear racks to length

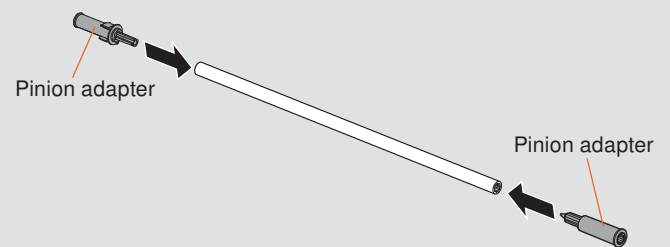


## Step 5 – Cut linkage rod to length



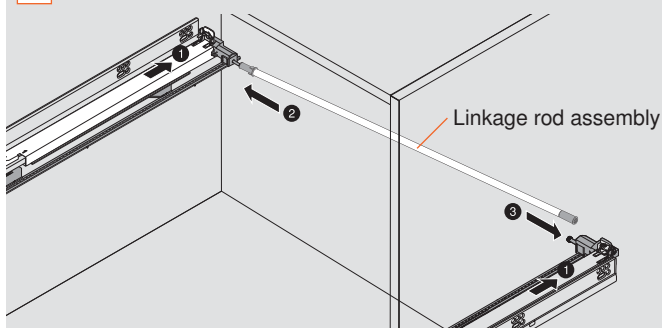
Linkage rod length equals opening width minus **298 (11-23/32")**

## Step 6 – Press pinion adapters into linkage rod



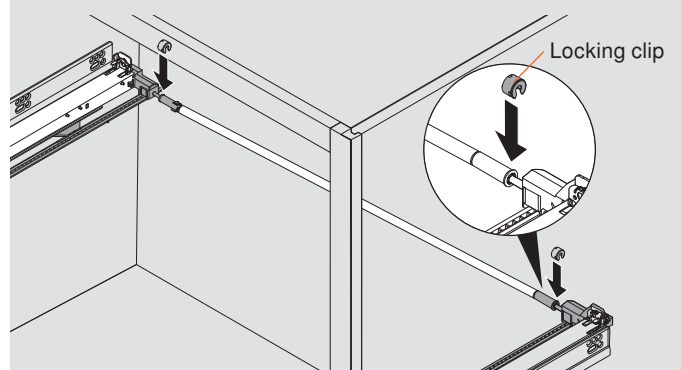
## Step 7 – Install linkage rod assembly

- 1 Close drawer runners
- 2 Slide linkage rod assembly left onto left pinion
- 3 Slide right pinion adapter onto right pinion



## Step 8 – Install locking clips

Install locking clips on both adapters



# TANDEM plus BLUMOTION



## Roll-out Shelf

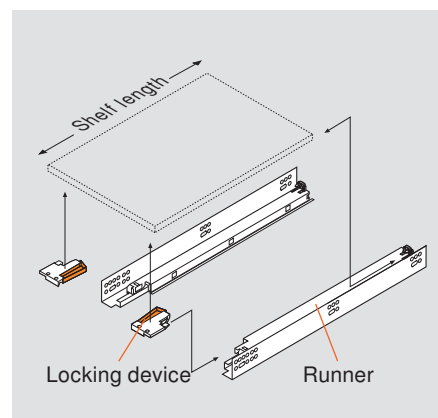
### Application



### Description

- Possible with any TANDEM runner
- 100 lb static load capacity

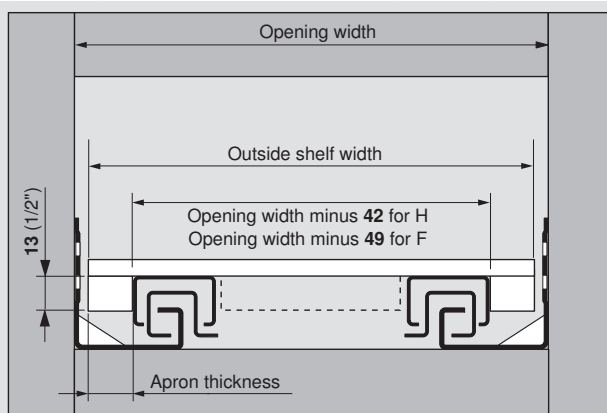
### Basic Components



### Components

#### Shelf size and position in opening

##### Front view



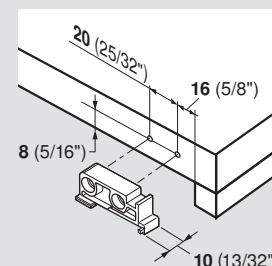
#### Calculating outside tray width

	F series runner			H series runner				
Apron thickness	19 (3/4")	18 (23/32")	17 (21/32")	16 (5/8")	15 (19/32")	14 (9/16")	13 (1/2")	12 (15/32")
Deduct from opening width	11 (7/16")	13 (1/2")	15 (19/32")	10 (13/32")	12 (15/32")	14 (9/16")	16 (5/8")	18 (23/32")

**NOTE:** Maximum apron thickness 16 (5/8") for H / Maximum apron thickness 19 (3/4") for F

#### Rear mounting block

Attach rear mounting block to the back of the shelf instead of notching and boring



- Eliminates the need to edge bore holes for hooks on roll-outs

**NOTE:** Shelf length = specified length for runner minus 10 (13/32")

Part no.	
Rear mounting block	T51.7000.01
Installation screw	6064N

#### Standard locking device with side-to-side adjustment



- One right and one left required per drawer
- Self-adjusting drawer length tolerance
- Minimum inside drawer width 170 (6-11/16")
- Height adjustment +3 (1/8")
- Side-to-side adjustment ±1.5 (1/16")
- For use with 563/569 series runners only
- For other options see page 32

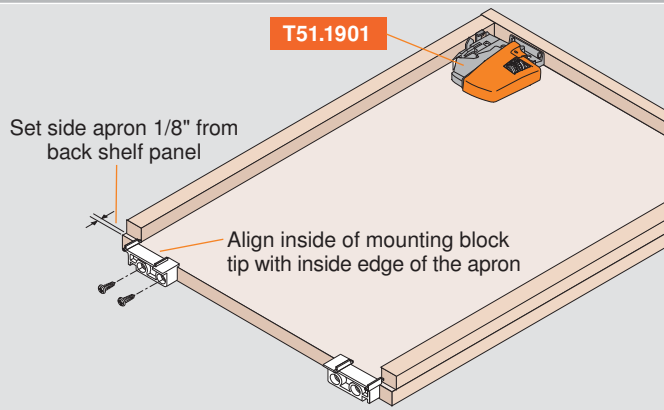
Part no.

Right locking device T51.1901 R

Installation Left locking device T51.1901 L

page 11 Installation screw 606N or 606P

#### Shelf assembly



## Bottom Mount Drawer

## TANDEM plus BLUMOTION



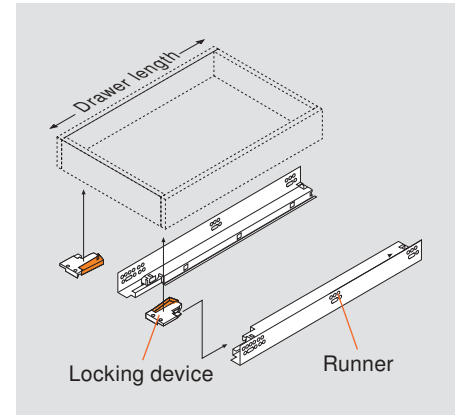
### Application



### Description

- Use 563H, 563, or 563F series in 15", 18" and 21" lengths
- Face frame or frameless cabinets
- Application is possible with any TANDEM 563/569 locking device
- 13 (1/2") to 19 (3/4") drawer thickness
- 100 lb static load capacity

### Basic Components



### Components

#### Runner set

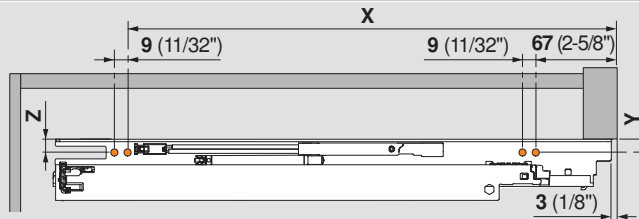
One set required per drawer



Maximum drawer material thickness	For overall cabinet depth	Drawer length	TANDEM plus BLUMOTION
16 (5/8")	610 (24")	533 (21")	563.5330B
	533 (21")	457 (18")	563.4570B
	610 (24")	533 (21")	563H5330B
	533 (21")	457 (18")	563H4570B
	457 (18")	381 (15")	563H3810B
19 (3/4")	610 (24")	533 (21")	563F5330B
	533 (21")	457 (18")	563F4570B
	457 (18")	381 (15")	563F3810B
Wood screw for installation			606N or 606P
System screw for installation			662.1150.HG

#### Runner mounting specifications

##### Top view



TANDEM plus BLUMOTION	Drawer length	Minimum inside cabinet depth	X	Y	Z
563.5330B	533 (21")	557 (21-15/16")	358 (14-3/32")	12 (15/32")	19 (3/4")
563.4570B	457 (18")	480 (18-29/32")	358 (14-3/32")	12 (15/32")	19 (3/4")
563H5330B	533 (21")	557 (21-15/16")	448 (17-5/8")	12 (15/32")	19 (3/4")
563H4570B	457 (18")	480 (18-29/32")	378 (14-7/8")	12 (15/32")	19 (3/4")
563H3810B	381 (15")	404 (15-29/32")	319 (12-9/16")	12 (15/32")	19 (3/4")
563F5330B	533 (21")	557 (21-15/16")	448 (17-5/8")	15.5 (5/8")	22.5 (7/8")
563F4570B	457 (18")	480 (18-29/32")	378 (14-7/8")	15.5 (5/8")	22.5 (7/8")
563F3810B	381 (15")	404 (15-29/32")	319 (12-9/16")	15.5 (5/8")	22.5 (7/8")

## TANDEM plus BLUMOTION



## SPACE CORNER

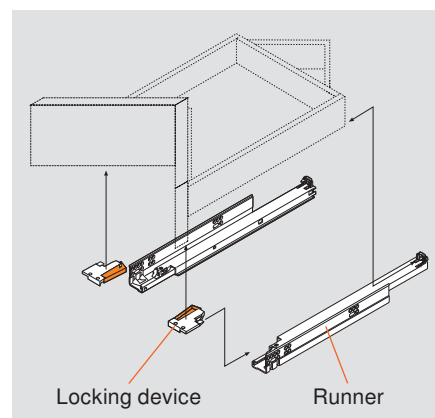
### Application



### Description

- Use longer length heavy duty TANDEM plus BLUMOTION runners
- Requires special cabinet and drawer construction (see note below)
- For **16** (5/8") maximum drawer side material use 569. series
- For **19** (3/4") maximum drawer side material use 569A series
- 150 lb static load capacity**

### Basic Components



### Components

#### Runner set

One set required per drawer



Sample SPACE CORNER drawer and cabinet plans are available for download at [blum.com](http://blum.com)

Corner cabinet size	Maximum <b>16</b> (5/8") drawer side thickness	Maximum <b>19</b> (3/4") drawer side thickness
36", 39" or 42"	<b>569.6860B</b>	<b>569A6860B</b>
Wood screw for installation	<b>606N or 606P</b>	
System screw for installation	<b>662.1150.HG</b>	

**NOTE:** SPACE CORNER requires special cabinet and drawer construction. See suggestions on cabinet construction at [blum.com](http://blum.com).

#### Standard locking device with side-to-side adjustment



- One right and one left required per drawer
- Captive right and self-aligning left device
- Self-adjusting drawer length tolerance
- Steel base with synthetic, spring-loaded release levers
- Minimum inside drawer width **170** (6-11/16")
- Height adjustment **+3** (1/8")
- Side-to-side adjustment **±1.5** (1/16")
- For use with 563/569 series runners only
- For other options see page 32

Part no.

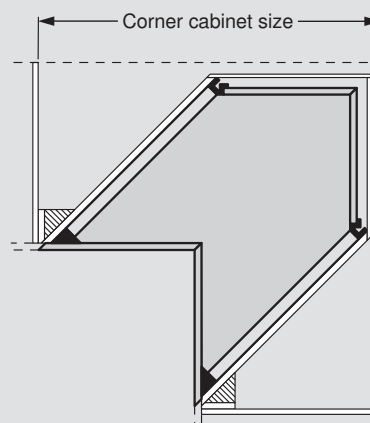
Right locking device **T51.1901 R**

Installation Left locking device **T51.1901 L**

page 11 Installation screw **606N or 606P**

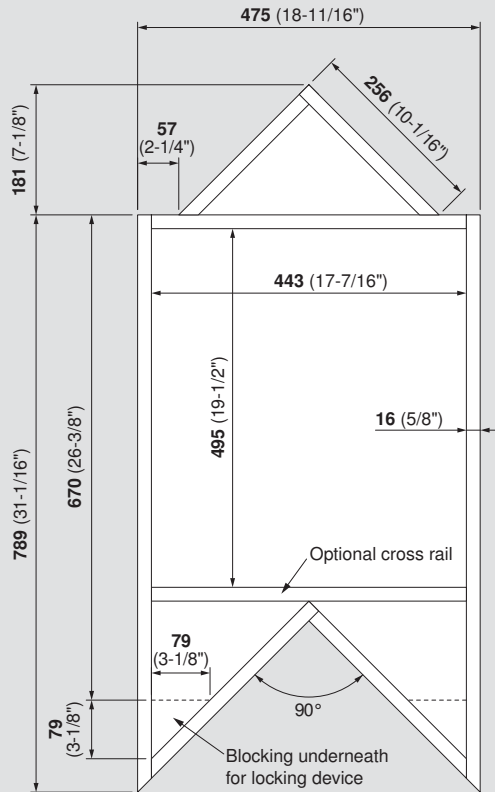
#### Measuring corner cabinet size

##### Top view



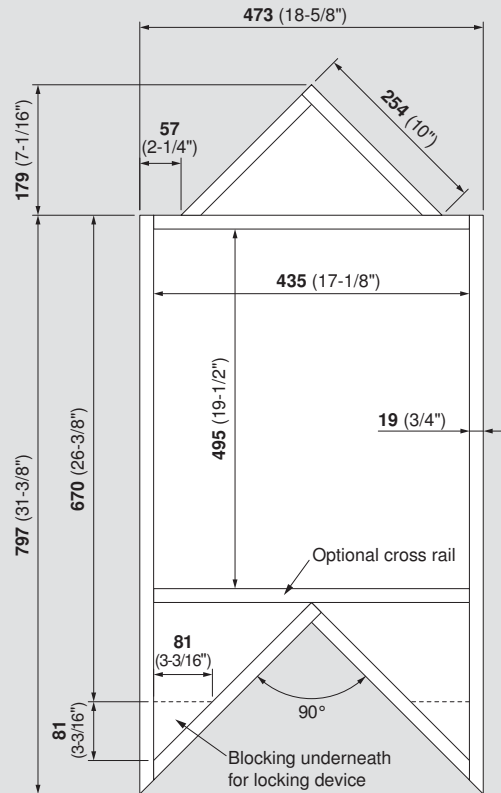
For a 39" SPACE CORNER using 5/8" material and 569.6860B

Top view



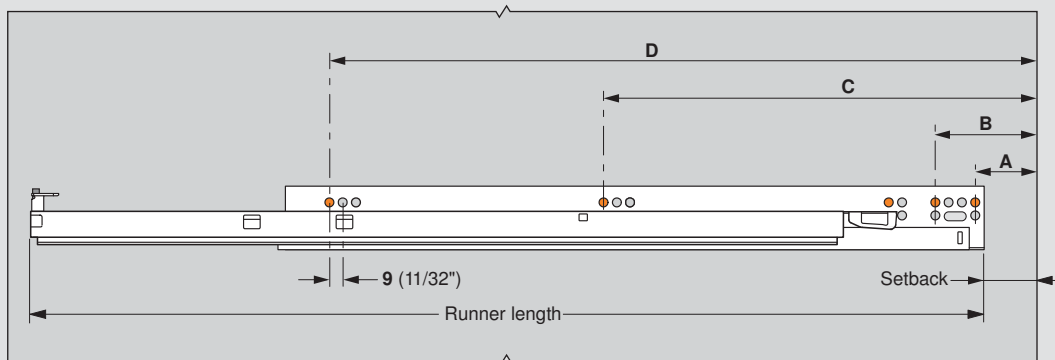
For a 39" SPACE CORNER using 3/4" material and 569A6860B

Top view



Mounting locations

Side view



**NOTE:** Detailed drawings for cabinet construction are available at [blum.com](http://blum.com)

TANDEM plus BLUMOTION	Drawer material	Setback	A	B	C	D
<b>569.6860B</b>	16 (5/8")	107 (4-7/32")	114 (4-1/2")	141 (5-9/16")	365 (14-3/8")	493 (19-13/32")
<b>569A6860B</b>	19 (3/4")	116 (4-9/16")	123 (4-27/32")	150 (5-29/32")	374 (14-23/32")	502 (19-3/4")

With Side-to-Side Adjustment

Standard

One right and one left required per drawer



- Captive right device and self-aligning left device
- Self-adjusting drawer length tolerance
- Steel base with synthetic, spring-loaded release levers
- Minimum inside drawer width **170** (6-11/16")
- Height adjustment **+3** (1/8")
- Side-to-side adjustment **±1.5** (1/16")

Part no.

Right locking device	<b>T51.1901 R</b>
Left locking device	<b>T51.1901 L</b>
Installation screw	<b>606N or 606P</b>

Vertical mount

One right and one left required per drawer



- Vertical mount locking device used to minimize sub-front splitting
- Captive right device and self-aligning left device
- Self-adjusting drawer length tolerance
- Steel base with synthetic, spring-loaded release levers
- Minimum inside drawer width **170** (6-11/16")
- Height adjustment **+3** (1/8")
- Side-to-side adjustment **±1.5** (1/16")
- Minimum sub-front thickness **16** (5/8")
- Designed for **13** (1/2") drawer bottom recess

Part no.

Right locking device	<b>T51.1901.20 R</b>
Left locking device	<b>T51.1901.20 L</b>
Installation screw	<b>606N or 606P</b>

Depth adjustable

One right and one left required per drawer






- Captive right device and self-aligning left device
- Self-adjusting drawer length tolerance
- Steel base with synthetic, spring-loaded release levers
- Minimum inside drawer width **170** (6-11/16")
- Height adjustment **+3** (1/8")
- Side-to-side adjustment **±1.5** (1/16")
- Depth adjustment **+2.5** (3/32"), preset at **0**
- Minimum sub-front thickness **13** (1/2")
- Designed for **13** (1/2") drawer bottom recess
- Integrated **3** (1/8") distance bumper for inset or overlay SERVO-DRIVE applications

Part no.

Right locking device	<b>T51.1901.PS R</b>
Left locking device	<b>T51.1901.PS L</b>
Installation screw	<b>606N or 606P</b>

## Without Side-to-Side Adjustment

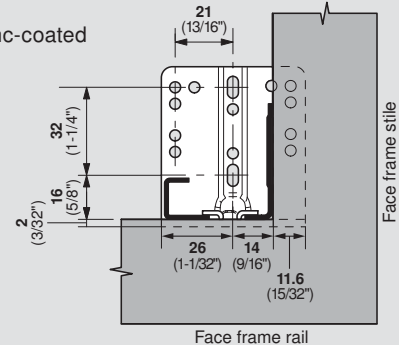
Standard			
<div>One right and one left required per drawer</div> 	<ul style="list-style-type: none"><li>For use with standard applications</li><li>Captive right device and self-aligning left device</li><li>Self-adjusting drawer length tolerance</li><li>Zinc die-cast with synthetic, spring-loaded release levers</li><li>Minimum inside drawer width <b>124</b> (4-7/8")</li><li>Height adjustment <b>+3</b> (1/8")</li></ul>	Part no.	
		Right locking device	<b>T51.1801 R</b>
		Left locking device	<b>T51.1801 L</b>
		Installation screw	<b>606N or 606P</b>
Vertical mount			
<div>One right and one left required per drawer</div> 	<ul style="list-style-type: none"><li>Vertical mount locking device used to minimize sub-front splitting</li><li>Captive right device and self-aligning left device</li><li>Self-adjusting drawer length tolerance</li><li>Zinc die-cast with synthetic, spring-loaded release levers</li><li>Minimum inside drawer width <b>124</b> (4-7/8")</li><li>Height adjustment <b>+3</b> (1/8")</li><li>Minimum sub-front thickness <b>16</b> (5/8")</li><li>Designed for <b>13</b> (1/2") drawer bottom recess</li></ul>	Part no.	
		Right locking device	<b>T51.1801.20 R</b>
		Left locking device	<b>T51.1801.20 L</b>
		Installation screw	<b>606N or 606P</b>
Narrow drawer			
<div>One right and one left required per drawer</div> 	<ul style="list-style-type: none"><li>For use with narrow drawers</li><li>Maximum dynamic load capacity 25 lb</li><li>Captive right device and self-aligning left device</li><li>Self-adjusting drawer length tolerance</li><li>Vertical mount, two-piece nylon</li><li>Minimum inside drawer width <b>95</b> (3-3/4")</li><li>Height adjustment <b>+3</b> (1/8")</li><li>Minimum sub-front thickness <b>16</b> (5/8")</li><li>Designed for <b>13</b> (1/2") drawer bottom recess</li></ul>	Part no.	
		Right locking device	<b>T51.0801.20 R</b>
		Left locking device	<b>T51.0801.20 L</b>
		Installation screw	<b>606N or 606P</b>

### Screw-on bracket

Two required per drawer



- For TANDEM 552, 562 and 563 H/F series runners only
- Lateral self-alignment **3** (1/8")
- Non-handed, one-piece stamped steel design, zinc-coated
- Use at least three #6 wood screws
- Not for use with 9" runners



Part no.

Screw-on bracket

**295.3750.02**

**NOTE:** Illustration is for 562/563 series

Installation screw

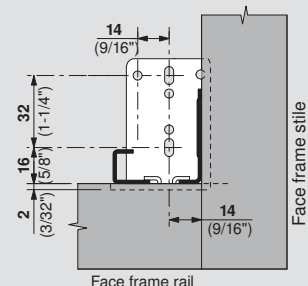
**606N or 606P**

### Narrow screw-on bracket

Two required per drawer



- For TANDEM 552, 562 and 563 H/F series runners only
- For applications with side recess space limitations (end panel)
- Maximum dynamic load capacity 45 lb
- Lateral self-alignment **3** (1/8")
- Non-handed, one-piece stamped steel design, zinc-coated
- Maximum inside cabinet depth is **15** (19/32") less than 295.3750.02 allows
- Use at least three #6 wood screws
- Not for use with 9" runners



Part no.

Screw-on bracket

**295.3550.01**

**NOTE:** Illustration is for 562/563 series

Installation screw

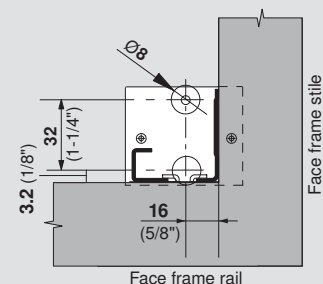
**606N or 606P**

### Plug-in socket

Two required per drawer



- For TANDEM 552, 562 and 563 H/F series runners only
- Lateral self-alignment feature
- Non-handed, two-piece design
- Synthetic, natural color
- Non-detachable **8** (5/16") dowels, **9.5** (3/8") long
- 6** (1/4") minimum back panel thickness
- Use at least two #6 flat head wood screws
- Not for use with 9" runners



Part no.

Plug-in socket

**295.6410**

Installation screw

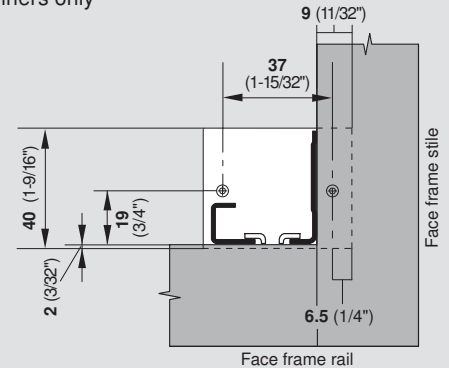
**606N or 606P**

## Screw-on socket

Two required per drawer



- For TANDEM 552, 562 and 563 H/F series runners only
- Lateral self-alignment
- Non-handed, two-piece design
- Synthetic, natural color
- Use two #6 flat head wood screws
- Not for use with 9" runners



Part no.

Screw-on socket

295.6400

Installation screw

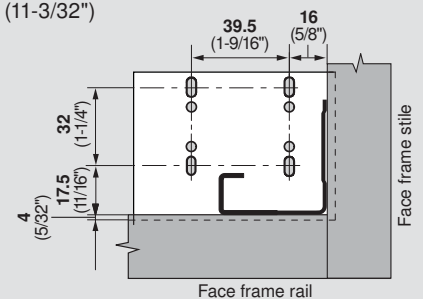
606N or 606P

## Screw-on socket for 9" TANDEM plus BLUMOTION runners

Two required per drawer



- For TANDEM 562 and 563 H/F series 9" runners only
- For use only when installing 9" runners in face frame cabinets
- For inside cabinet depths **266** (10-15/32") to **282** (11-3/32")
- Minimum opening width **156** (6-5/32")
- Lateral self-alignment
- Non-handed, one piece design
- Synthetic, natural color
- Use at least three #6 wood screws



Part no.

Screw-on socket

295.3700.21

Installation screw

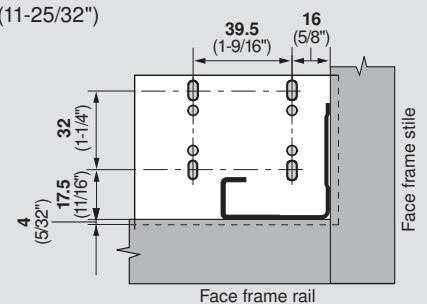
606N or 606P

## Screw-on socket for 9" TANDEM plus BLUMOTION runners

Two required per drawer



- For TANDEM 562 and 563 H/F series 9" runners only
- For use only when installing 9" runners in face frame cabinets
- For inside cabinet depths **283** (11-5/32") to **299** (11-25/32")
- Minimum opening width **156** (6-5/32")
- Lateral self-alignment
- Non-handed, one piece design
- Synthetic, natural color
- Use at least three #6 wood screws



Part no.

Screw-on socket

295.3700.22

Installation screw

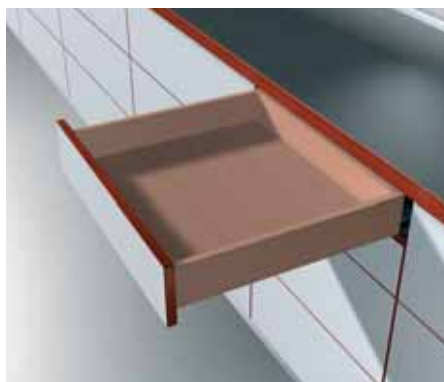
606N or 606P

# TANDEM plus BLUMOTION



## TIP-ON for TANDEM plus

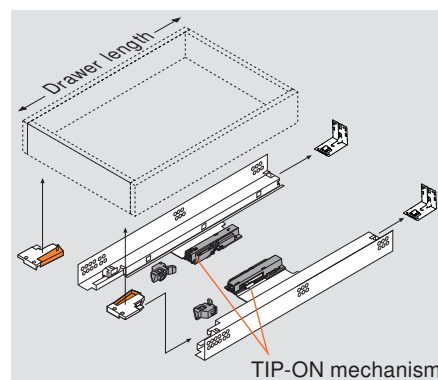
### Overlay Application



### Description

- Designed for drawers without pulls
- Opens the drawer with just a touch of the drawer front
- Tool-free attachment of the mechanism and trigger
- Optimal dynamic load capacity 45 lb
- 100 lb static load capacity**
- Only works with TANDEM plus 562 H series runners without BLUMOTION**

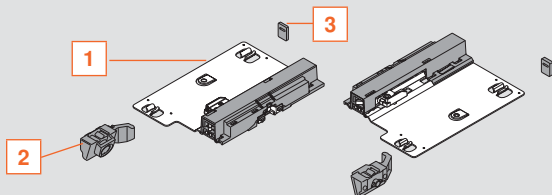
### Basic Components



### Components

#### TIP-ON for TANDEM plus set

One set required per drawer



#### Set includes:

- TIP-ON mechanisms (qty 2)
- Adjustable triggers (qty 2)
- Rear hook spacers (qty 2)

Part no.

TIP-ON for TANDEM plus set

**T55.7150S**

#### Runner set

One set required per drawer



For overall cabinet depth	Drawer length	TANDEM plus
		Maximum 16 (5/8") drawer side thickness
610 (24")	533 (21")	<b>562H5330C</b>
533 (21")	457 (18")	<b>562H4570C</b>
457 (18")	381 (15")	<b>562H3810C</b>
381 (15")	305 (12")	<b>562H3050C</b>
Wood screw for installation		<b>707N</b>
System screw for installation		<b>661.1300.HG</b>

#### Standard locking device for 552/562/568 series



- One right and one left required per drawer
- Minimum inside drawer width **121 (4-3/4")**
- Height adjustable +3 (1/8")

Part no.

Right locking device	<b>T51.1700.04 R</b>
Left locking device	<b>T51.1700.04 L</b>
Installation screw	<b>612TH</b>

#### Rear mounting bracket for frame cabinets



For use when installing TANDEM runners in face frame cabinets. Not necessary for frameless cabinet installation.

- Two required per drawer
- Depth and lateral self-alignment
- Zinc-coated steel

Part no.

Non-handed bracket	<b>295.3750.02</b>
Installation screw	<b>612TH</b>

## Specifications

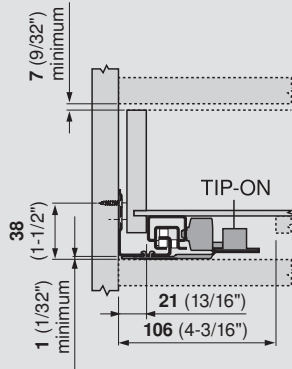
Maximum drawer thickness	16 (5/8")
Lengths available	12" - 21"
Static load capacity	100 lb

## TANDEM plus BLUMOTION



### TANDEM 562H dimensions

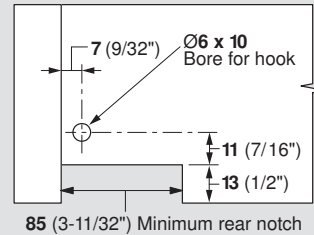
#### Front view



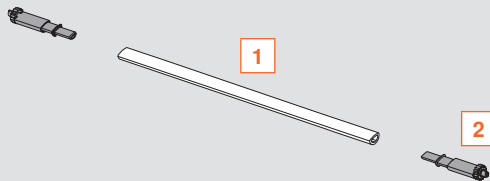
**NOTE:** Minimum cabinet opening width for TIP-ON is 229 (9")

### Drawer back preparation

#### Rear view



### TIP-ON for TANDEM plus synchronization set (optional)



- Recommended for cabinet widths from 610 (24") to 1220 (48") wide (face frame and frameless)
- Synchronizes left and right TIP-ON mechanisms to improve function on wide drawers

#### Set includes:

- 1 Linkage rod, 908 (35-3/4") cut to length
- 2 Pinion gears (qty 2)
- Instruction sheet

Part no.

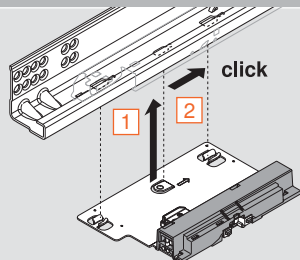
TIP-ON for TANDEM plus synchronization set

**T55.908WR**

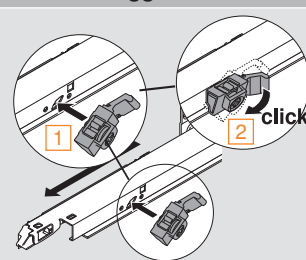
**NOTE:** Linkage rod length equals opening width minus 277 (10-15/16"). Maximum opening width equals 1185 (46-5/8").

## Assembly and Adjustment

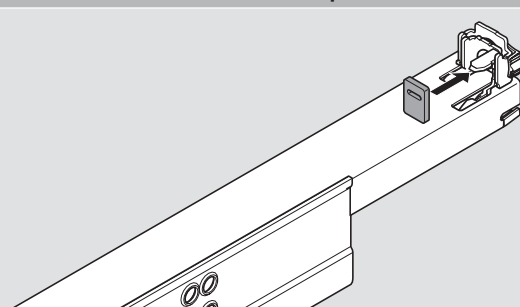
### Step one – Attachment of mechanism



### Step two – Attachment of trigger

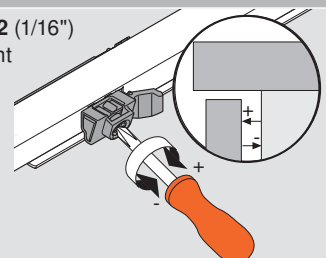


### Step three – Attachment of rear hook spacer



### Step four – Front gap adjustment

Trigger allows -1 (1/32'') in and +2 (1/16'') out adjustment of the drawer front



**NOTE:** Minimum front gap = 2.5 (3/32'')

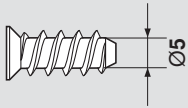
## TANDEM plus BLUMOTION



## Accessories and Assembly Aids

### Deep thread system screw

- Pilot bore Ø5 (3/16") hole



Part no.

#6 x 11.5, #2 POZI	<b>662.1150.HG</b>
#7 x 13, #2 POZI	<b>661.1300.HG</b>
#7 x 14.5, #2 POZI	<b>661.1450.HG</b>

### Deep thread wood screw

- Pilot bore Ø2.5 (3/32") hole



Part no.

#6 x 5/8", #2 Phillips	<b>606N</b>
#6 x 5/8", #2 POZI	<b>606P</b>
#7 x 5/8", #2 Phillips	<b>707N</b>

### Truss head wood screw

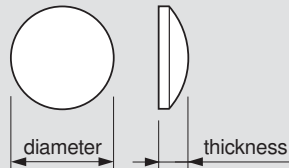
- Pilot bore Ø2.5 (3/32") hole



Part no.

#6 x 1/2", #2 Phillips	<b>612TH</b>
------------------------	--------------

### Bumpers



- Cushions door closing
- Clear with a self-adhesive back

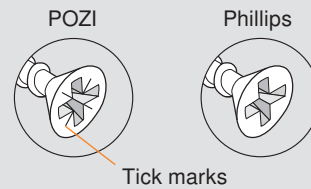
Part no.

Ø7.5 (9/32") x 2 (3/32")	<b>FX4041</b>
Ø12 (15/32") x 3.5 (1/8")	<b>SJ5312</b>

### POZI DRIVER and bits



A POZI screwdriver (different from Phillips) is the most crucial tool you can use to assure that full torque is applied to all Blum mounting screws. POZI screws can be identified by the distinctive "tick" marks located in the center of the screw head recess.



Part no.

#2 POZI DRIVER	<b>POZI DRIVER</b>
1/4" Magnetic bit holder	<b>BIT HOLDER</b>
#2 x 1" POZI bit insert	<b>POZI BIT #2x1</b>
#2 x 2" POZI bit insert	<b>POZI BIT #2x2</b>

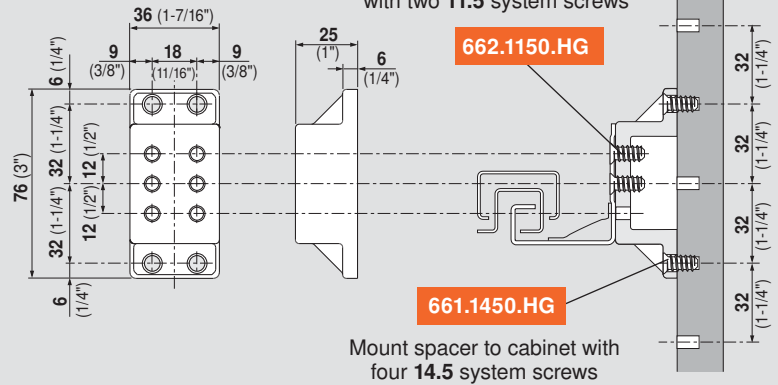
**Side spacer**

For spacing out TANDEM runners from the cabinet side for clearance in interior roll-out applications



Part no.

Side spacer - 1" thick

**T59.3570****Side spacer**

**NOTE:** Use (2) pieces per runner up to 15" lengths and (3) pieces per runner 18" or longer

**TANDEM end cap**

- To cover the front edge of TANDEM runners when used in an interior roll-out application
- Can be used with TANDEM 562/563 H/F. runners



Part no.

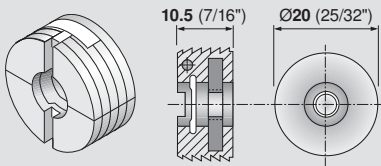
Right end cap

**295.5520**

Left end cap

**295.5521****Drawer front adjuster**

- Nylon housing with pre-mounted 8-32 steel nut
- For four-sided drawers
- Adjusts height and side-to-side by 5 (3/16")



Part no.

Drawer front adjuster

**295.1000.21**

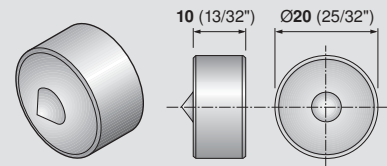
MINIPRESS insertion ram

**MZM.0095**

Ø20 mm right handed drill bit

**M01.ZB20.02 RH****Drawer front adjuster marking gauge**

- For marking center holes for press-in drawer front adjusters
- For four-sided drawers



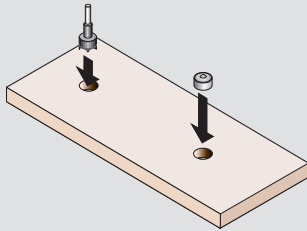
Part no.

Marking gauge

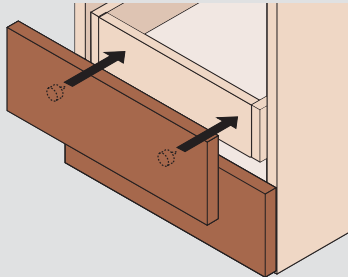
**65.2950.10**

### Using the marking gauge

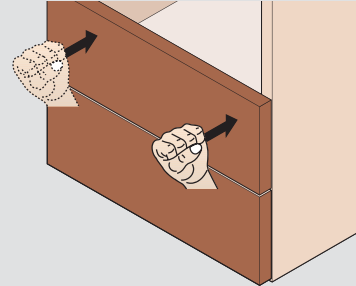
- 1 Pre-bore for front adjusters and then insert marking gauges into drawer front



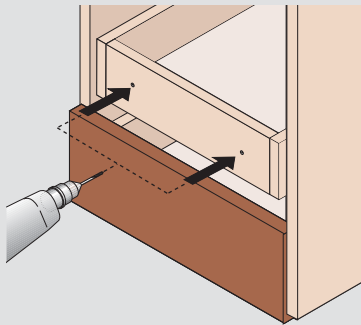
- 2 Align the drawer front to make marks in the drawer box



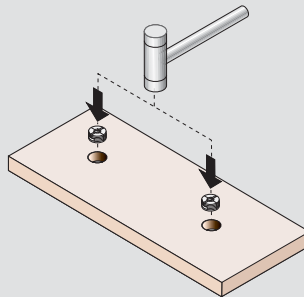
- 3 Align the drawer front and give a light tap to make marks in the drawer box



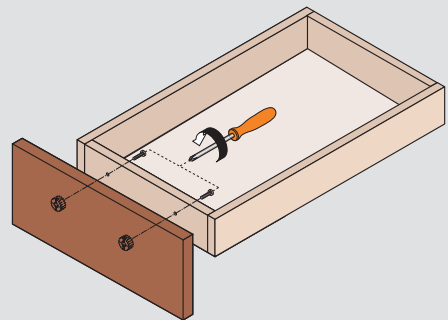
- 4 Bore Ø5 (3/16") holes through the drawer box



- 5 Remove marking gauges and insert drawer front adjusters manually or with a MINIPRESS insertion ram

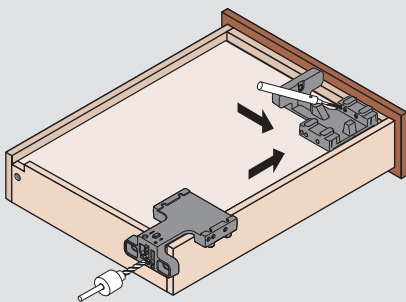


- 6 Install and adjust drawer front



### Concealed Runner Template

- Essential tool for drawers using any series TANDEM runners
- To bore the Ø6 holes for rear hooks
- Pre-bore Ø2.5 hole for TANDEM locking devices at the required angle

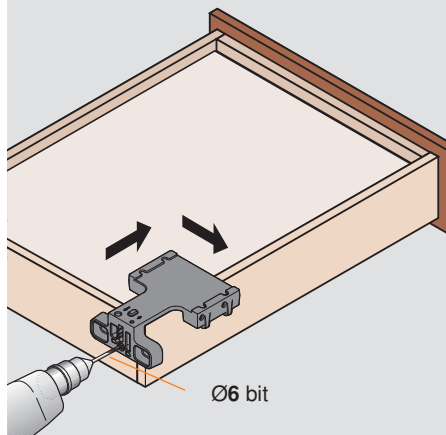


Part no.

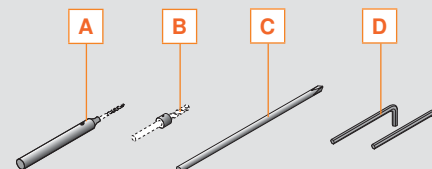
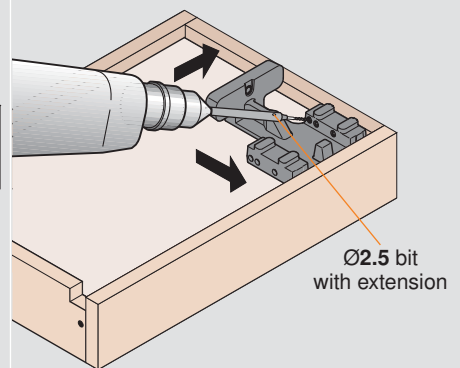
Template	<b>T65.1600.01</b>
<b>Accessories</b> (order separately)	
Ø2.5 mm drill bit	<b>DB-2.5mm</b>
Ø6 mm drill bit	<b>DB-6mm</b>
Tool set	<b>T65.9000</b>

### Using the Concealed Runner Template

- 1 Bore rear fixing holes



- 2 Pre-bore holes for locking device screws



#### Tool set includes:

- A** Ø2.5 drill bit extension
- B** Ø6 stop collar
- C** #2 Phillips screwdriver tip
- D** Allen wrenches

**NOTE:** Items NOT sold separately

## Universal individual template



- For pre-boring TANDEM drawer runners
- Also used for marking/pre-boring other Blum drawer systems, AVENTOS locating pins, hinge mounting plates, BLUMOTION adapters, and TIP-ON adapters
- Calibrated scale for accurate setting

## Set includes:

- Universal individual template
- Ø2.5 and Ø5 stop collars
- Allen wrench

Part no.

Universal individual template

65.1051.02

## Cabinet profile template set



- Used for pre-boring holes for TANDEM drawer runners
- Also used for marking/pre-boring other Blum drawer systems, AVENTOS locating pins and hinge mounting plates

Part no.

Cabinet profile template

65.1000.01

Replacement template

65.1001.01

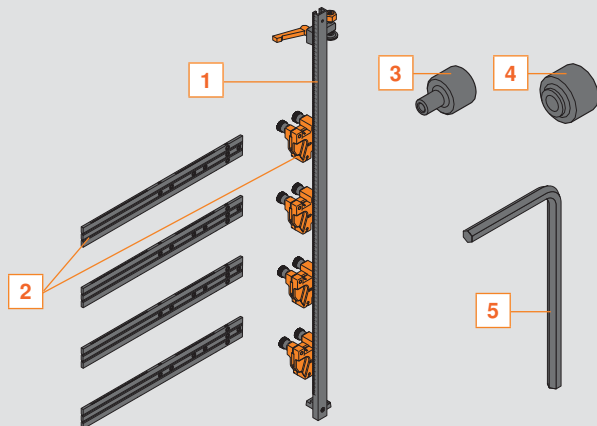
Ø2.5 mm drill bit

DB-2.5mm

Ø5 mm drill bit

DB-5mm

## Components



## Set includes:

- Rail, 1 meter long
- Replacement template (qty 4)
- Ø2.5 stop collar
- Ø5 stop collar
- Allen wrench

**NOTE:** ONLY the replacement template is sold separately



## Blum's Ideas for Functional Kitchens

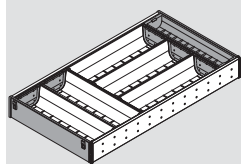
This adjustable organization solution for wood drawers is ideal for storing items in the kitchen and throughout the home.

The spring loaded compensation tray and side rails ensure that each kit will fit into an inside drawer length from 19 - 1/4" to 20".

The removeable trays are made of high quality nylon and stainless steel, and are dishwasher safe up to 170°F.

[blum.com/ideas](http://blum.com/ideas)

### Flatware



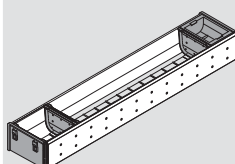
- Width **284** (11-3/16")
- Height **65** (2-9/16")

Part no.

21" drawer length

**ZHI.533BI3A**

### Odds and ends



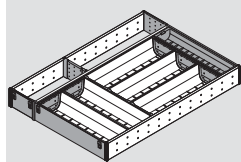
- Width **108** (4-1/4")
- Height **65** (2-9/16")

Part no.

21" drawer length

**ZHI.533BI1A**

### Flatware



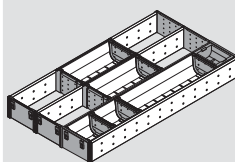
- Width **381** (15")
- Height **65** (2-9/16")

Part no.

21" drawer length

**ZHI.533KI4A**

### Odds and ends



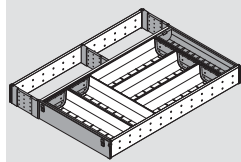
- Width **302** (11-7/8")
- Height **65** (2-9/16")

Part no.

21" drawer length

**ZHI.533MI3A**

### Flatware



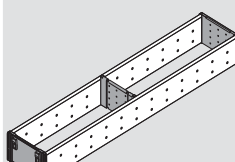
- Width **400 to 419** (15-3/4" to 16-1/2")
- Height **65** (2-9/16")

Part no.

21" drawer length

**ZHI.533TI4A**

### Utensils



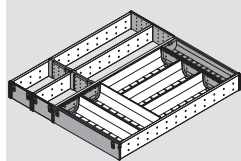
- Width **108** (4-1/4")
- Height **65** (2-9/16")

Part no.

21" drawer length

**ZHI.533FI1A**

### Flatware



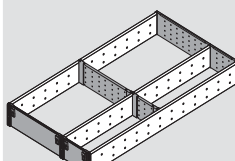
- Width **477 to 495** (18-3/4" to 19-1/2")
- Height **65** (2-9/16")

Part no.

21" drawer length

**ZHI.533TI5A**

### Utensils



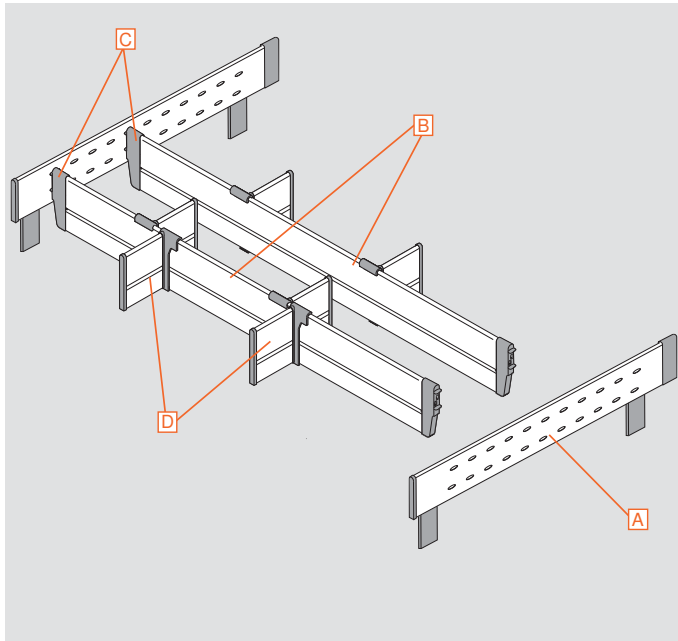
- Width **294** (11-9/16")
- Height **65** (2-9/16")

Part no.

21" drawer length

**ZHI.533FI3A**

## Deep Drawer



A Interior side rail	
<ul style="list-style-type: none"> <li>Two required</li> <li>Length <b>475</b> (18-11/16")</li> <li>Height <b>131</b> (5-3/16")</li> </ul>	Part no.
Interior side rail	<b>ZHI.533SS65</b>

B Cross divider	
<ul style="list-style-type: none"> <li>Length <b>1077</b> (42-3/8"), cut to size</li> <li>Inside drawer width minus <b>62</b> (2-7/16")</li> <li>Height <b>113</b> (4-1/2")</li> <li>Gray</li> </ul>	Part no.
Cross divider	<b>Z40H1077A</b>

C Spring loaded connector	
<ul style="list-style-type: none"> <li>Two required</li> <li>Dust gray</li> </ul>	Part no.
Spring loaded connector	<b>Z40H000A</b>

D Lateral divider	
<ul style="list-style-type: none"> <li>Length <b>100</b> (3-15/16")</li> <li>Height <b>116</b> (4-9/16")</li> <li>Gray</li> </ul>	Part no.
Lateral divider	<b>Z43H100S.01</b>

## Accessories

ORGA-LINE Knife holder	
<ul style="list-style-type: none"> <li>Length <b>280</b> (11")</li> <li>Width <b>180</b> (7-1/8")</li> <li>Holds up to nine knives of different sizes</li> <li>High quality nylon and stainless steel</li> <li>Dishwasher safe up to 170°F</li> <li>Handle supports (qty 4)</li> </ul>	Part no.
Knife holder	<b>ZSZ.02M0</b>

ORGA-LINE Spice tray	
<ul style="list-style-type: none"> <li>Width <b>282</b> (11-1/8")</li> <li>Inside storage width <b>260</b> (10-1/4")</li> <li>Height <b>121</b> (4-3/4")</li> <li>Easy removal from drawer</li> <li>High quality nylon and stainless steel</li> <li>Set includes two trays and four feet</li> </ul>	Part no.
Spice tray	<b>ZFZ.38G01</b>

Plate holder	
<ul style="list-style-type: none"> <li>Adjustable width <b>186 to 322</b> (7-5/16" to 12-11/16")</li> <li>Overall height <b>170</b> (6-11/16")</li> <li>Holds up to 12 plates</li> <li>Non-slip bottom</li> <li>High quality nylon and stainless steel</li> </ul>	Part no.
Plate holder	<b>ZC7T0350</b>

## TANDEM plus BLUMOTION



### Additional Information

#### Conversion chart

mm	inch	
1	1/32	.031
1.5	1/16	.063
2	3/32	.094
3	1/8	.125
4	5/32	.156
5	3/16	.188
5.5	7/32	.219
6	1/4	.25
7	9/32	.281
8	5/16	.313
9	11/32	.344
9.5	3/8	.375
10	13/32	.406
11	7/16	.438
12	15/32	.469
13	1/2	.5
13.5	17/32	.531
14	9/16	.563
15	19/32	.594
16	5/8	.625
17	21/32	.656
17.5	11/16	.688
18	23/32	.719
19	3/4	.75
20	25/32	.781
20.5	13/16	.813
21	27/32	.844
22	7/8	.875
23	29/32	.906
24	15/16	.938
24.5	31/32	.969
25.4	1	1



#### SERVO-DRIVE

SERVO-DRIVE is an electrical opening assist for TANDEM and TANDEMBOX. Drawers open automatically with just a touch of the drawer front or with a light pull of the handle. This unique feature is based on an electrical drive unit that, once activated, opens the drawer for you.

Existing cabinets can be easily retrofitted with SERVO-DRIVE. No modifications to the drawer system are necessary when upgrading.

With SERVO-DRIVE, the drawer is not connected to the drive unit. This enables the drawer to be stopped at any position, providing you full control.



#### Connect With Us on Social Media

Be sure to connect with us on social media for additional resources for information regarding tips on installation, maximizing storage space, new products and other news and events going on inside Blum.

Find us by searching "Blum Inc" in the search bar.





Part no.	Page no.	Part no.	Page no.	Part no.	Page no.
295.1000.21	39	BIT HOLDER	38	ZHI.533TI5A	42
295.3550.01	34	DB-2.5mm	40, 41	ZSZ.02M0	43
295.3700.21	35	DB-5mm	41		
295.3700.22	35	DB-6mm	40		
295.3750.02	34	FX4041	38		
295.5520	39	MZM.0095	39		
295.5521	39	M01.ZB20.02 RH	39		
295.6400	35	POZI DRIVER	38		
295.6410	34	POZI BIT #2x1	38		
562H3050C	36	POZI BIT #2x2	38		
562H3810C	36	SJ5312	38		
562H4570C	36	T51.0801.20 R	33		
562H5330C	36	T51.0801.20 L	33		
563.4570B	12, 29	T51.1700.04 R	36		
563.5330B	12, 29	T51.1700.04 L	36		
563F2290B10	16	T51.1801 R	33		
563F3050B	16	T51.1801 L	33		
563F3810B	16, 29	T51.1801.20 R	33		
563F4570B	16, 29	T51.1801.20 L	33		
563F5330B	16, 29	T51.1901 R	32		
563H2290B10	14	T51.1901 L	32		
563H3050B	14	T51.1901.20 R	32		
563H3810B	14, 29	T51.1901.20 L	32		
563H4570B	14, 29	T51.1901.PS R	32		
563H5330B	14, 29	T51.1901.PS L	32		
569.6100B	18	T51.7000.01	28		
569.6860B	18, 30	T55.7150S	36		
569.7620B	18	T55.908WR	37		
569A6100B	20	T59.3570	39		
569A6860B	20, 30	T59.A5P0S	22		
569A7620B	20	T65.1600.01	40		
569F4570B	20	T65.9000	40		
569F5330B	20	ZST.686TU01	26		
569H4570B	18	Z40H000A	43		
569H5330B	18	Z40H1077A	43		
606N	38	Z43H100S.01	43		
606P	38	ZC7T0350	43		
612TH	38	ZFZ.38G0I	43		
65.1000.01	41	ZHI.533BI1A	42		
65.1001.01	41	ZHI.533BI3A	42		
65.1051.02	41	ZHI.533FI1A	42		
65.2950.10	39	ZHI.533FI3A	42		
661.1300.HG	38	ZHI.533KI4A	42		
661.1450.HG	38	ZHI.533MI3A	42		
662.1150.HG	38	ZHI.533SS65	43		
707N	38	ZHI.533TI4A	42		





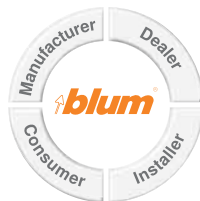
## Why Choose Blum



Blum, Inc. is a leading manufacturer of functional hardware for the kitchen cabinet and commercial casework industries specializing in lift systems, concealed hinges and drawer runner systems. Virtually all of the hardware needed to assemble and make cabinets functional is available within the wide range of quality Blum products. Blum supports the U.S. market with a network of more than 150 dependable distributors, 40+ knowledgeable Blum sales representatives and an experienced customer service department.

### Commitment to Manufacturing in the U.S.

Blum manufactures many of its products in our 450,000 sq ft manufacturing, logistics and warehouse facility located in Stanley, North Carolina. Manufacturing closer to the customer allows Blum to react quickly to changing customer needs including unexpected surges in demand. Customer pickups and deliveries can be timed to better match their production schedules. Blum is committed to manufacturing in the U.S. for the U.S. market.



Product development at Blum considers all of the various customers who will come in contact with our products. With this "Global Customer Benefits" philosophy we strive to create advantages for all users.



Blum, Inc. is ISO 9001 certified which means that you are assured of consistent quality in every Blum product. They exceed the requirements of ANSI/BHMA standards for cycle life, static load and self-closing performance.



Please visit [blum.com](http://blum.com) for information on other Blum products  
LIT.TDM1100.06.17 Ident. 26288480 © 2017 Blum, Inc.

Blum, Inc.  
7733 Old Plank Rd.  
Stanley, NC 28164  
800-438-6788  
[blum.com](http://blum.com)



**ISO 9001**  
Certified Quality  
System

