



**LIST PRICES &
SPECIFICATIONS**

2019

Prices effective 2/15/2019



Nationwide, Family-Owned



Made In USA

kitchencompact.com



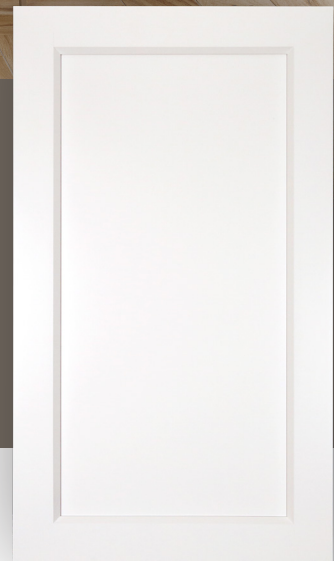
COMING
SOON
2019



White

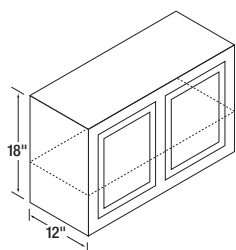
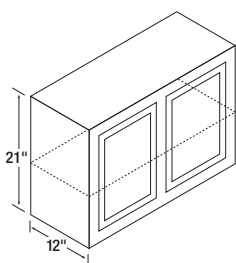
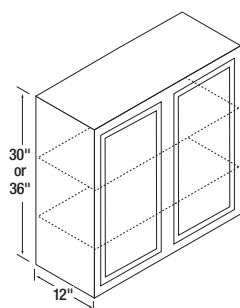
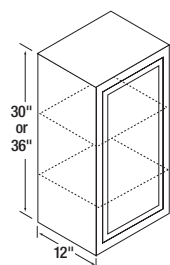
BY KITCHEN KOMPACT

Our recessed panel, Shaker style cabinets will soon be available in painted white. This painted wood door style enables a variety of design options with countertops, flooring and decorative backsplashes. Door pulls not included.



kitchenkompact.com

Wall Cabinets



36" High Wall Cabinets (WT)

Item	Glenwood	Warmwood	Chadwood
12WT*	\$172	172	180
15WT*	\$177	177	186
18WT*	\$187	187	196
21WT*	\$197	197	206
24WT*	\$212	212	222
27WT	\$255	255	266
30WT	\$266	266	279
33WT	\$271	271	284
36WT	\$297	297	310

*Single door. Single door wall units are reversible for right or left hinging, simply turn the cabinet over.

30" High Wall Cabinets (W)

Item	Glenwood	Warmwood	Chadwood
9W*	\$121	121	126
12W*	\$137	137	144
15W*	\$142	142	150
18W*	\$151	151	158
21W*	\$157	157	164
24W*	\$171	171	179
27W	\$213	213	223
30W	\$224	224	235
33W	\$228	228	239
36W	\$238	238	249
42W	\$251	251	264
48W	\$292	292	306

*Single door. Single door wall units are reversible for right or left hinging, simply turn the cabinet over.

21" High Wall Cabinets (R)

Item	Glenwood	Warmwood	Chadwood
24R*	\$151	151	158
30R	\$177	177	186
36R	\$187	187	196
42R	\$205	205	216

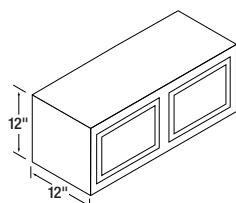
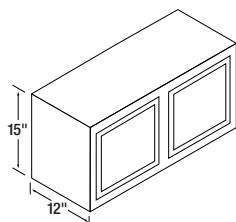
*Single door.

18" High Wall Cabinets (Y)

Item	Glenwood	Warmwood	Chadwood
24Y*	\$138	138	145
30Y	\$166	166	175
36Y	\$176	176	184
42Y	\$196	196	205

*Single door.

Wall Cabinets *cont'd*



15" High Wall Cabinets (X)

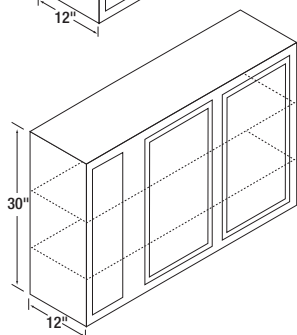
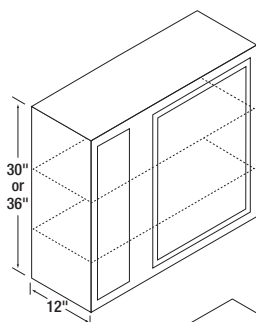
Item	Glenwood	Warmwood	Chadwood
30X	\$156	156	164
33X	\$160	160	168
36X	\$165	165	173
39X	\$168	168	174

12" High Wall Cabinets (X12)

Item	Glenwood	Warmwood	Chadwood
30X12	\$147	147	154
36X12	\$156	156	163

*Single door.

Wall Corner Cabinets



36" High Wall Corner Cabinets (WCT)

Item	Glenwood	Warmwood	Chadwood
24WCT*	\$197	197	206
36WCT*	\$255	255	266

All lines may be pulled 4-1/2".

*Single door.

30" High Wall Corner Cabinets (WC)

Item	Glenwood	Warmwood	Chadwood
24WC*	\$168	168	177
36WC*	\$213	213	223
39WC	\$233	233	244
42WC	\$242	242	254
48WC	\$267	267	280

All lines may be pulled 4-1/2".

*Single door.

24WC Can pull to 28-1/2" - One 6" opening. One 6" Stile. One 9" opening for a 27 x 9-1/2" door.

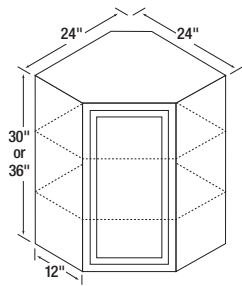
36WC Can pull to 40-1/2" - One 6" opening. One 6" Stile. One 21" opening for a 27 x 21-1/2" door.

39WC Can pull to 43-1/2" - One 6" opening. One 6" Stile. Two 10-1/2" openings for two 27 x 11" doors. One 3" Stile (between 10-1/2" openings).

42WC Can pull to 46-1/2" - One 6" opening. One 6" Stile. Two 12" openings for two 27 x 12-1/2" doors. One 3" Stile (between 12" openings).

48WC Can pull to 52-1/2" - One 6" opening. One 6" Stile. Two 15" openings for two 27 x 15-1/2" doors. One 3" Stile (between 15" openings).

Angle Wall Cabinets



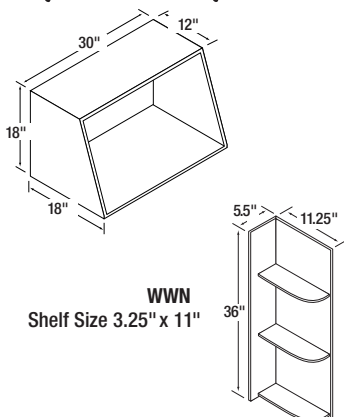
36" High Angle Wall Cabinet (AT)

Item	Glenwood	Warmwood	Chadwood
24AT	\$297	297	310

30" High Angle Wall Cabinet (A)

Item	Glenwood	Warmwood	Chadwood
24A	\$238	238	249

Specialty Cabinets



Microwave Cabinet (MW)

Item	Glenwood	Warmwood	Chadwood
30MW	\$187	187	170

For proper height, install the microwave cabinet under a **30X** cabinet. Inside width is 28.5".

36" High Wall Whatnot Cabinet (WWN)

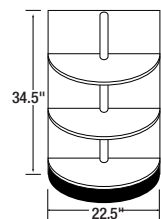
Item	Glenwood	Warmwood	Chadwood
WWN	\$133	133	128

Priced and packaged 2 per box. May be used right or left. All shelves come unattached. Width may be cut down 1-1/2" and height may be cut down 6".

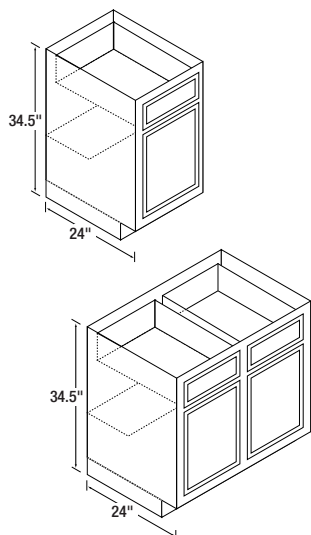
Base Whatnot Cabinet (BWN)

Item	Glenwood	Warmwood	Chadwood
BWN 1/2	\$151	151	162

Half round is 12" deep.



Base Cabinets



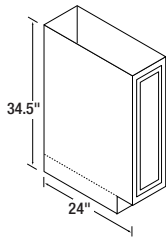
Base Cabinets (B)

Item	Glenwood	Warmwood	Chadwood
12B*	\$199	199	209
15B*	\$212	212	223
18B*	\$224	224	235
21B*	\$246	246	258
24B*	\$265	265	277
27B* (3" Side Stiles)	\$290	290	305
30B	\$323	323	338
33B (3" Side Stiles)	\$334	334	350
36B	\$345	345	361
42B	\$374	374	393
48B	\$395	395	415

Toe Kick is 4" high x 3" deep.

*Single door. Single door base units are reversible, simply hang door right or left, using holes predrilled in rails.

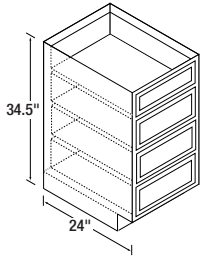
Tray Cabinet



Tray Cabinet (T)

Item	Glenwood	Warmwood	Chadwood
9T	\$177	177	186

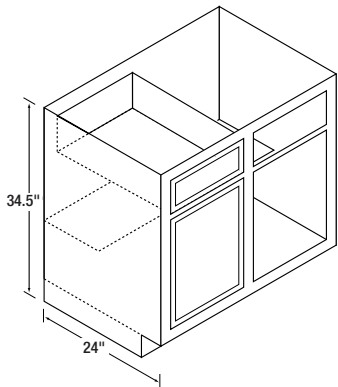
Drawer Cabinets



Drawer Cabinets (D)

Item	Glenwood	Warmwood	Chadwood
15D	\$305	305	319
18D	\$324	324	339
24D	\$367	367	384

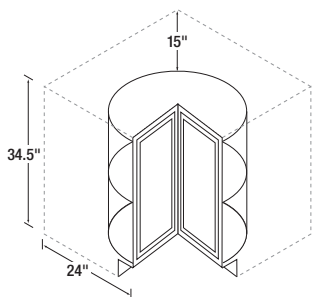
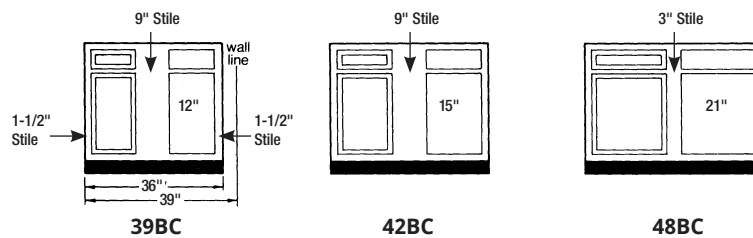
Base Corner Cabinets



Base Corner Cabinets (BC)

Item	Glenwood	Warmwood	Chadwood
39BC	\$286	286	300
42BC	\$304	304	318
48BC	\$324	324	341

39BC must be pulled to 39" and may be pulled to 46". **42BC** and **48BC** may be pulled to 49".

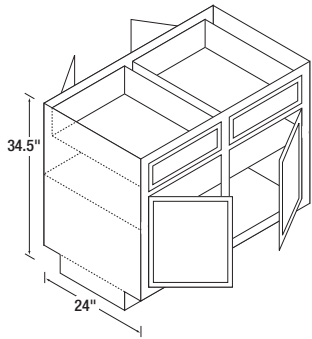


Lazy Susan Corner Cabinet (LS)

Item	Glenwood	Warmwood	Chadwood
36LS	\$474	474	496

Lazy Susan is 34-1/2" high and takes up 36" on each wall. Actual shelf is 24" diameter. Shipped without end panels.

Peninsula Base Cabinets

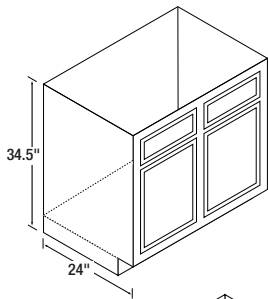


Peninsula Base Cabinets (P)

Item	Glenwood	Warmwood	Chadwood
36B-P	\$511	511	536
48B-P	\$591	591	621
48BC-P	\$524	524	550

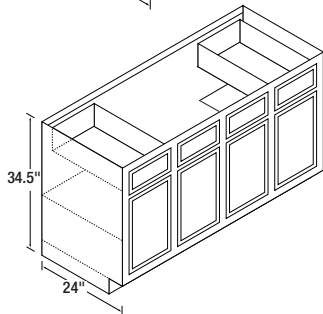
BC-P indicates Blind Corner Peninsula.

Range & Sink Base Cabinets



Range & Sink Base Cabinets (RBS)

Item	Glenwood	Warmwood	Chadwood
30RBS	\$271	271	284
33RBS (3" Side Stiles)	\$275	275	288
36RBS	\$287	287	301
42RBS	\$316	316	331

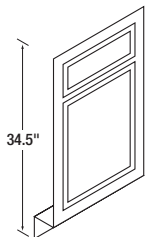


Sink Base Cabinets (SB)

Item	Glenwood	Warmwood	Chadwood
60SB	\$508	508	534
72SB	\$555	555	583

No shelf under sink (center section) and no back on cabinet.
Combination unit consists of 15-30-15 or 18-36-18.
Opening between drawers on **60SB** is 33".
Opening between drawers on **72SB** is 39".

Sink Front

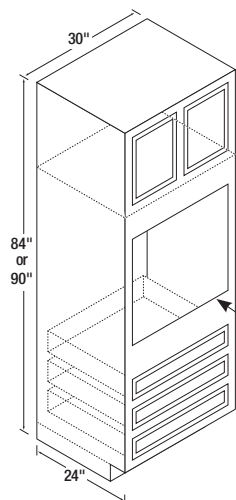


Sink Front (SF)

Item	Glenwood	Warmwood	Chadwood
18SF*	\$113	113	118

*Square edge.

Oven Cabinets



90" High Oven Cabinet (OUT)

Item	Glenwood	Warmwood	Chadwood
30OUT	\$968	968	1,015

Metal support rails included.

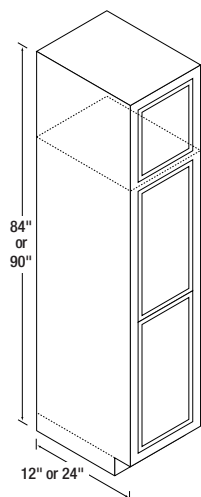
84" High Oven Cabinet (OU)

Item	Glenwood	Warmwood	Chadwood
30OU	\$775	775	814

Metal support rails included.

To accommodate almost every type of oven, the opening can be cut from a minimum width of 21" to a maximum width of 28.5" and a minimum height of 27.5" to a maximum height of 60" (One or more lower drawers may need to be removed).

Broom Cabinets



90" High Broom Cabinets (BRT)

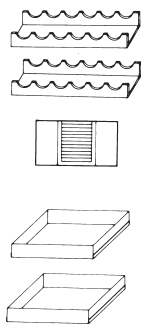
Item	Glenwood	Warmwood	Chadwood
18BRWT (12" deep)	\$452	452	474
18BRBT (24" deep)	\$529	529	554
24BRBT (24" deep)	\$754	754	790

84" High Broom Cabinets (BR)

Item	Glenwood	Warmwood	Chadwood
18BRW (12" deep)	\$389	389	407
18BRB (24" deep)	\$455	455	477
24BRB (24" deep)	\$604	604	633

No shelves included with **Broom Cabinets**. Optional **Shelf Kit** Includes four (4) shelves and clips: **18BRW/BRWT** kits @ \$45/kit, **18BRB/18BRBT** kits @ \$84/kit, and **24BRB/BRBT** kits @ \$112/kit.

Accessories

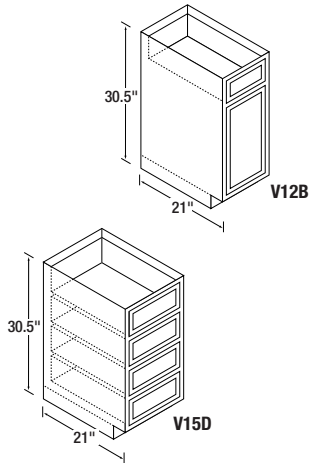


Accessories

Item	Glenwood	Warmwood	Chadwood
Wine Rack Kit 36-1/2" x 10" (priced and packaged 2 per box)	\$157	157	142
Appliance Garage 17-5/8" x 18-1/4" (to fit beneath 24A)	\$276	276	249
Pantry/Base Roll-Out Tray (priced per tray - packaged 2 trays per box)			
15BT	\$68	68	68
18BT	\$74	74	74
24BT	\$78	78	78

Vanity Cabinets

30.5" High Vanity Cabinets (V)

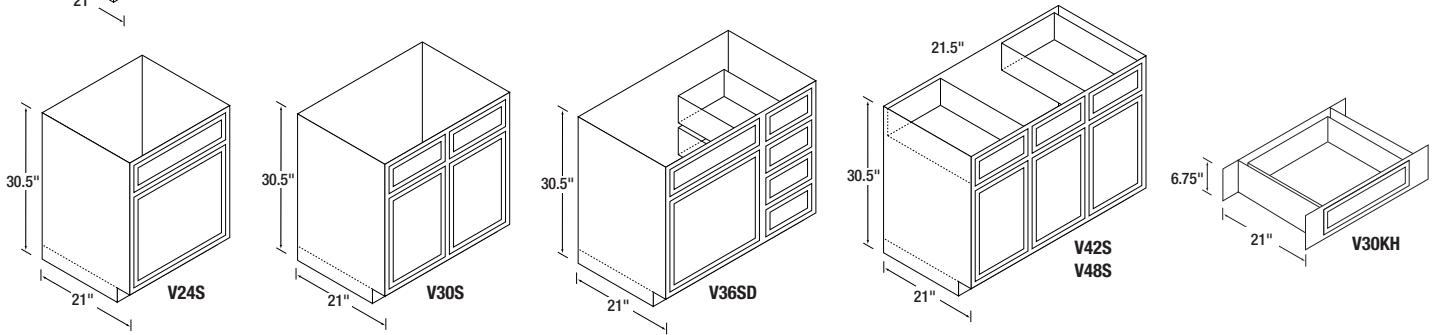


Item	Glenwood	Warmwood	Chadwood
V12B	\$199	199	209
V15D	\$277	277	290
V24S	\$235	235	246
V30S	\$258	258	271
V36SD	\$351	351	368
V42S*	\$366	366	383
V48S*	\$386	386	405
V30KH**	\$150	150	157

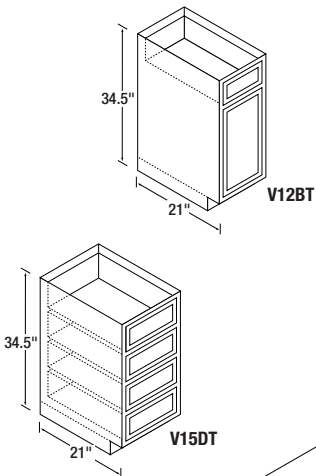
Opening between drawers on **V42S/V48S** is 21.5".

*Two outside working drawers.

**Can be cut down 3" on each side.



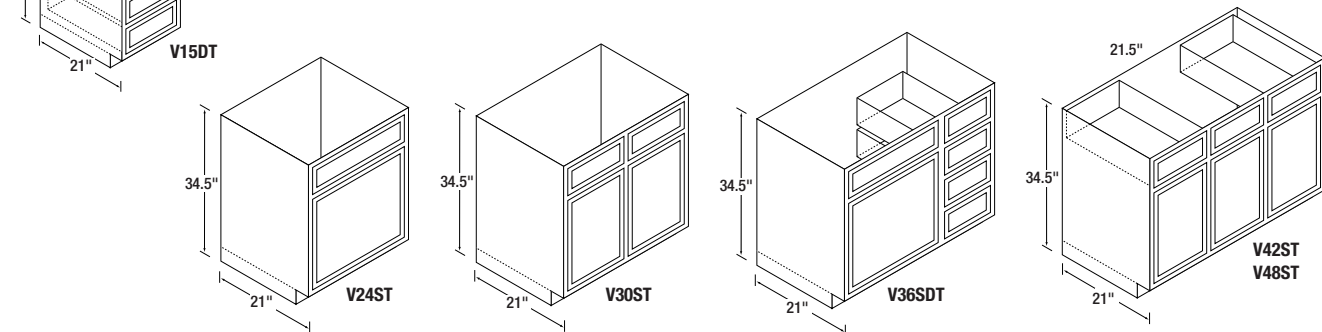
34.5" High Vanity Cabinets (VT)



Item	Glenwood	Warmwood	Chadwood
V12BT	\$220	220	NA
V15DT	\$311	311	NA
V24ST	\$254	254	NA
V30ST	\$281	281	NA
V36SDT	\$387	387	NA
V42ST*	\$379	379	NA
V48ST*	\$399	399	NA

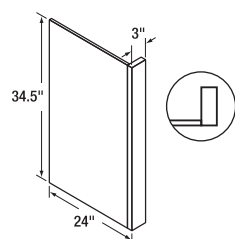
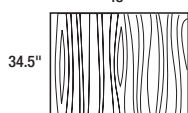
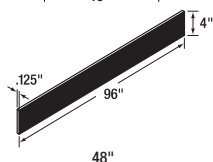
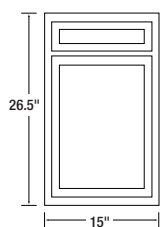
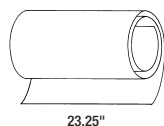
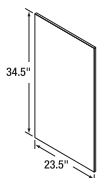
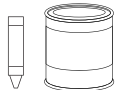
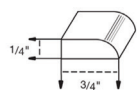
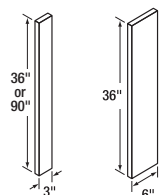
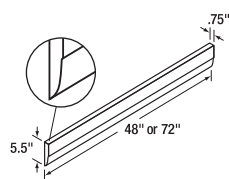
Opening between drawers on **V42S/V48S** is 21.5".

*Two outside working drawers.



All Standard/Tall Vanities 21" Deep.

Miscellaneous Items



Miscellaneous Items

Item	Glenwood	Warmwood	Chadwood
Valance Boards			
48" Val 3/4" x 5-1/2" x 48" (6 to ctn.)			
Each	\$43	43	61
72" Val 3/4" x 5-1/2" x 72" (6 to ctn.)			
Each	\$57	57	81
Filler Strips			
3" Filler Strips 3"W x 36"L (12 to ctn.)			
Each	\$21	21	26
6" Filler Strips 6"W x 36"L (6 to ctn.)			
Each	\$33	33	53
3" Filler Strips 3"W x 90"L (12 to ctn.)			
Each	\$46	46	64
Scribe Molding			
8' Pieces 1/4" x 3/4" x 96" (500' to ctn.)			
Per lineal ft.	\$3	3	2
Touch-Up			
Touch-Up Sticks (12 to ctn.)			
Each	\$27	27	27
Pints of Stain			
Each	\$48	48	31
Base End Panels - EP			
May be used R or L 1/2" x 23-1/2" x 34-1/2" (6 to ctn.)			
Each	\$46	46	46
End Covers (self-adhesive backing)			
Base - 23-1/4" x 34-1/2" (6 to ctn.)			
Each	\$110	110	99
Oven - 23-1/4" x 90" (6 to ctn.)			
Each	\$301	301	270
Salesman Sample Door & Frame			
15" x 26-1/2" Front (4 to ctn.)			
Each	\$120	120	126
Toe Kick Material			
Black Hardboard 1/8" x 4" x 96" (200' to ctn.)			
Per lineal ft.	\$1	1	1
Back Panels (also for dishwashers)			
3/16" x 34-1/2" x 48" (6 to ctn.)			
Each	\$125	125	112
End Panel Faced - EPF3 (faced with 3" stile)			
May be used R or L 1/2" x 24" x 34-1/2" (4 to ctn.)			
Each	\$84	84	88

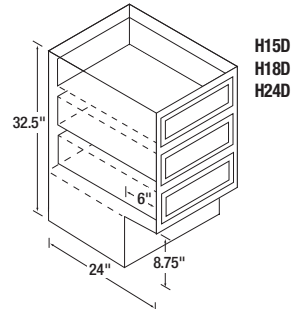
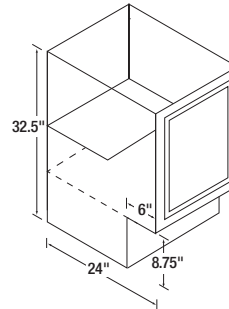
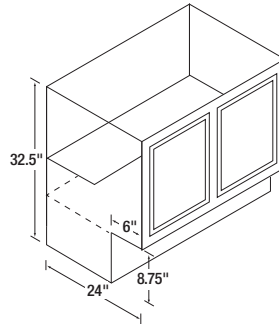
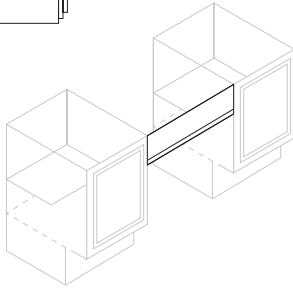
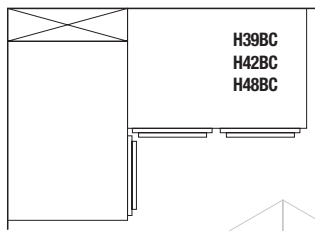
ADA Accessible Cabinets

Price is plus 15% over standard base cabinet.

Handicapped Design Cabinets (H)

Handicapped Design cabinets include:

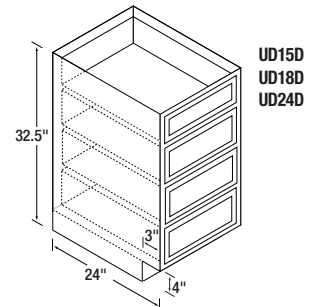
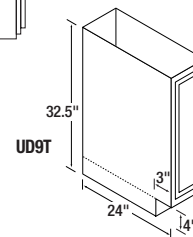
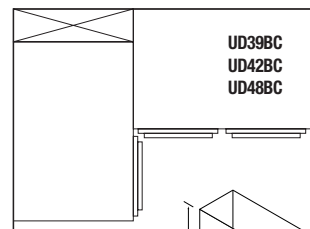
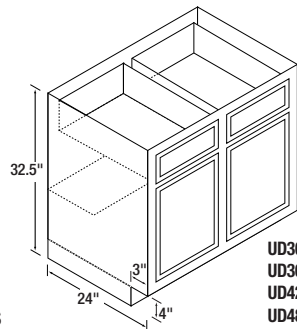
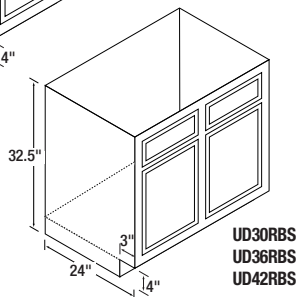
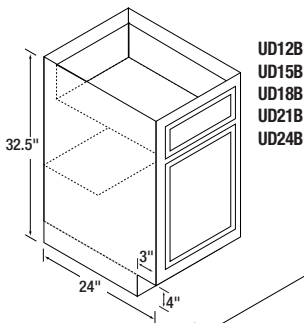
- Height of 32.5"
- Toe Kick is 8.75"
- No drawers



Universal Design Cabinets (UD)

Universal Design cabinets include:

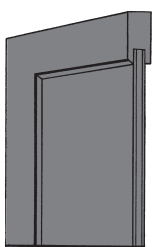
- Height of 32.5"
- Standard 4" Toe Kick
- Functioning drawers



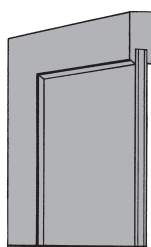
Door Styles

Glenwood and Warmwood:

Shaker style door frames are made of solid beech, mortised and tenoned. The recessed plywood insert is three-ply with a rotary cut hard maple veneer. Drawer heads have routed finger pulls.



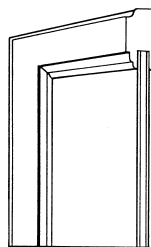
Glenwood



Warmwood

Chadwood:

Solid Appalachian oak frames are joined by mortise and tenon. The recessed plywood insert is three-ply with a rotary cut red oak veneer. Drawer heads have routed finger pulls.



Chadwood Oak

Specifications

Cabinet Construction

All face frames are 3/4" kiln-dried rails, joined by mortise and tenon with glue. Glenwood and Warmwood face frames are built using a mixture of solid beech and sycamore. Chadwood face frames are built using solid oak. All wall and base cabinets have 1/8" backs. Wall cabinets equipped with solid wood hanging rails at back, both top and bottom. End panels are wood veneered, 1/2" thick engineered wood core plywood, fastened to front frame with tongue-in-groove construction. Tops and bottoms of 3/16" hardboard dadoed into sides, interlocked into hanging rails of all wall units, and secured with an adhesive for added strength.

Finish

A 4-step process is applied to the exterior finish of Glenwood, Warmwood, and Chadwood: Stain, Sealer, Sanding, and Catalyzed Top Coat.

Shelves

All wall cabinets feature adjustable shelves. A selection of six different heights is built into each 30" high and taller wall cabinet. On 2-door wall units, the center 3" stile is used for center support of adjustable shelves. It is recommended that a 1/4" hole be drilled in the back for additional center support. The extra shelf clip is provided. Shelves are 1/2" engineered wood, with rounded front edge and printed wood grain.

Hardware

Chadwood, Glenwood, and Warmwood feature concealed self-closing hinges – no door pulls included.

Vanities

Vanity size cabinets are available in all lines. Tall vanities only available in Glenwood and Warmwood.

Doors

Chadwood: Door frames are mortised and tenoned construction of solid oak. The recessed plywood insert is three-ply with a rotary cut red oak veneer.

Glenwood/Warmwood: Shaker style door frames are made of solid beech, mortised and tenoned. The recessed plywood insert is three-ply with a rotary cut hard maple veneer.

Drawers

Plywood drawers are standard on all lines. The drawers operate with a full front to back epoxy coated suspension system on nylon rollers.

Drawer fronts of solid oak and beech with routed finger grips on the bottom for easy opening.

Oven Cabinets

Oven cabinets are made to accommodate almost every type oven by removing the necessary lower drawer units. Metal support rails are included.

ADA Accessible Cabinets

Kitchen Kompact will only provide ADA accessible cabinets on multi-family projects where the ADA accessible cabinets are 10% or less of the entire project. ADA accessible cabinets are available, on special order, in a limited number of sizes.

Outline Specifications

Kitchen cabinets shall be as manufactured by Kitchen Kompact according to the company's material specifications. Finishes and cabinet units (Chadwood, Glenwood, and Warmwood) are as specified by size and type according to Kitchen Kompact stock catalogs. Cabinets are reversible so there is no need to specify left or right. Hardware, finish, materials, and other requirements shall be as specified by Kitchen Kompact. Each cabinet is shipped individually and in its own carton.

Cabinet Code Descriptions

For ease of ordering, the numerical designation indicates the cabinet width, the letter identifies the height.

Flexible Installation

Wall cabinets are reversible for right- or left-hand installation. Base cabinets come hinged left, but can be easily reversed by moving hinges to predrilled right-hand locations.

General Information

Orders are taken subject to our approval. Any changes must be made within four days after date of our acknowledgment. If this notice is not received, cabinets will be shipped according to the acknowledgment. Orders are not subject to cancellation without our written consent. Do not return merchandise to factory without our permission. All merchandise shipped in good condition - any damage claims must be made with delivering carrier.

For Installation and Care Guidelines, visit our website!
kitchenkompact.com

SUBJECT TO CHANGE WITHOUT NOTICE. SHIPMENTS F.O.B. JEFFERSONVILLE. Kitchen Kompact cabinets meet or exceed the American National Standards Institute #A161.1 recommended minimum construction and performance standards for kitchen and vanity cabinets.

Kitchen Kompact, Inc. reserves the right to change design, specifications or materials without being obliged to incorporate such changes in products of prior manufacture. The artwork and specifications contained herein are the property of Kitchen Kompact, Inc., and may not be copied or reproduced without the written consent of the company.



Kitchen Kompact, Inc.
911 East 11th St. (47130)
P.O. Box 868
Jeffersonville, IN 47131-0868
(812) 282-6681 Phone
(812) 282-7880 Fax

kitchenkompact.com



2020

Kitchen Kompact is certified under the Kitchen Cabinet Manufacturers Association's Environmental Stewardship Program*.

* This certification has been recognized by the National Association of Home Builders' (NAHB) with the Green Building Award for Advocate of the Year for its environmental and sustainability achievements.

PL/SS 1218 Printed in USA